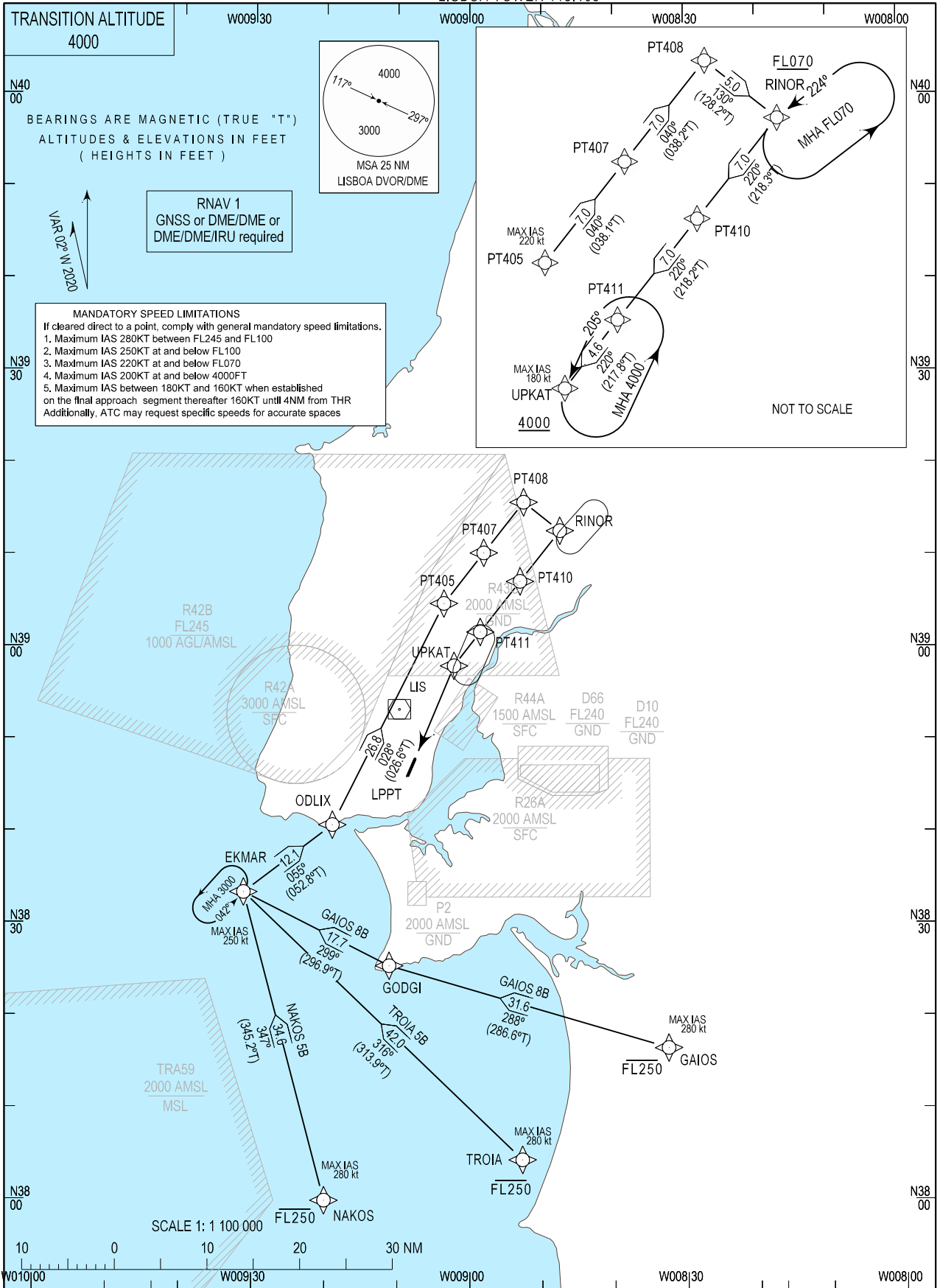


STANDARD ARRIVAL CHART -
INSTRUMENT (STAR) - ICAO

LISBOA ARR INFORMATION 124.155
LISBOA CONTROL 123.980
LISBOA APPROACH 119.105
LISBOA ARRIVAL 125.130
LISBOA TOWER 118.105

LISBOA, Humberto Delgado (LPPT)
RNAV RWY 20
GAIOS 8B, NAKOS 5B, TROIA 5B



MAG VAR changed. New RWY designator.

STANDARD INSTRUMENT ARRIVAL (STAR) RUNWAY 20

RNAV 1 – GNSS or DME/DME or DME/DME/IRU

STAR RNAV 1 GAIOS 8B RWY 20

Procedure Coding Table

Path Terminator	Waypoint			Course/Track MAG (True)	Dist NM	Turn Direction	Constraints		Nav Specs	Remarks
	Identifier	Flyover	Coordinates				Level	Speed		
IF	GAIOS	-	381631.88N 0083235.19W	-	-	-	-FL250	280Kt	RNAV 1	Clearance limit: UPKAT
TF	GODGI	-	382526.88N 0091108.35W	288 (286.6)	31.61	-	-	-	RNAV 1	
TF	EKMAR	-	383326.56N 0093117.20W	299 (296.9)	17.72	Right	-	250Kt	RNAV 1	
TF	ODLIX	-	384044.12N 0091901.50W	055 (052.8)	12.06	Right	-	-	RNAV 1	
TF	PT405	-	390444.84N 0090336.13W	028 (026.6)	26.84	Left	-	220Kt	RNAV 1	
TF	PT407	-	391014.20N 0085803.88W	040 (038.1)	6.97	Right	-	-	RNAV 1	
TF	PT408	-	391543.31N 0085230.77W	040 (038.2)	6.98	-	-	-	RNAV 1	
TF	RINOR	-	391237.34N 0084727.66W	130 (128.2)	5.00	Right	+FL070	-	RNAV 1	
TF	PT410	-	390708.47N 0085300.93W	220 (218.3)	6.98	Right	-	-	RNAV 1	
TF	PT411	-	390139.34N 0085833.34W	220 (218.2)	6.98	-	-	-	RNAV 1	
TF	UPKAT	-	385759.04N 0090212.05W	220 (217.8)	4.64	Right	+4000ft	180Kt	RNAV 1	

STAR RNAV 1 NAKOS 5B RWY 20

Path Terminator	Waypoint			Course/Track MAG (True)	Dist NM	Turn Direction	Constraints		Nav Specs	Remarks
	Identifier	Flyover	Coordinates				Level	Speed		
IF	NAKOS	-	380000.00N 0092004.18W	-	-	-	-FL250	280Kt	RNAV 1	Clearance limit: UPKAT
TF	EKMAR	-	383326.56N 0093117.20W	347 (345.2)	34.56	-	-	250Kt	RNAV 1	
TF	ODLIX	-	384044.12N 0091901.50W	055 (052.8)	12.06	Right	-	-	RNAV 1	
TF	PT405	-	390444.84N 0090336.13W	028 (026.6)	26.84	Left	-	220Kt	RNAV 1	
TF	PT407	-	391014.20N 0085803.88W	040 (038.1)	6.98	Right	-	-	RNAV 1	
TF	PT408	-	391543.31N 0085230.77W	040 (038.2)	6.98	-	-	-	RNAV 1	
TF	RINOR	-	391237.34N 0084727.66W	130 (128.2)	5.00	Right	+FL070	-	RNAV 1	
TF	PT410	-	390708.47N 0085300.93W	220 (218.3)	6.98	Right	-	-	RNAV 1	
TF	PT411	-	390139.34N 0085833.34W	220 (218.2)	6.98	-	-	-	RNAV 1	
TF	UPKAT	-	385759.04N 0090212.05W	220 (217.8)	4.64	Right	+4000ft	180Kt	RNAV 1	

STAR RNAV 1 TROIA 5B RWY 20

Path Terminator	Waypoint			Course/Track MAG (True)	Dist NM	Turn Direction	Constraints		Nav Specs	Remarks
	Identifier	Flyover	Coordinates				Level	Speed		
IF	TROIA	-	380423.71N 0085244.95W	-	-	-	-FL250	280Kt	RNAV 1	Clearance limit: UPKAT
TF	EKMAR	-	383326.56N 0093117.20W	316 (313.9)	41.98	-	-	250Kt	RNAV 1	
TF	ODLIX	-	384044.12N 0091901.50W	055 (052.8)	12.06	Right	-	-	RNAV 1	
TF	PT405	-	390444.84N 0090336.13W	029 (026.6)	26.84	Left	-	220Kt	RNAV 1	
TF	PT407	-	391014.20N 0085803.88W	040 (038.1)	6.97	Right	-	-	RNAV 1	
TF	PT408	-	391543.31N 0085230.77W	040 (038.2)	6.98	-	-	-	RNAV 1	
TF	RINOR	-	391237.34N 0084727.66W	130 (128.2)	5.00	Right	+FL070	-	RNAV 1	
TF	PT410	-	390708.47N 0085300.93W	220 (218.3)	6.98	Right	-	-	RNAV 1	
TF	PT411	-	390139.34N 0085833.34W	220 (218.2)	6.98	-	-	-	RNAV 1	
TF	UPKAT	-	385759.04N 0090212.05W	220 (217.8)	4.64	Right	+4000ft	180Kt	RNAV 1	