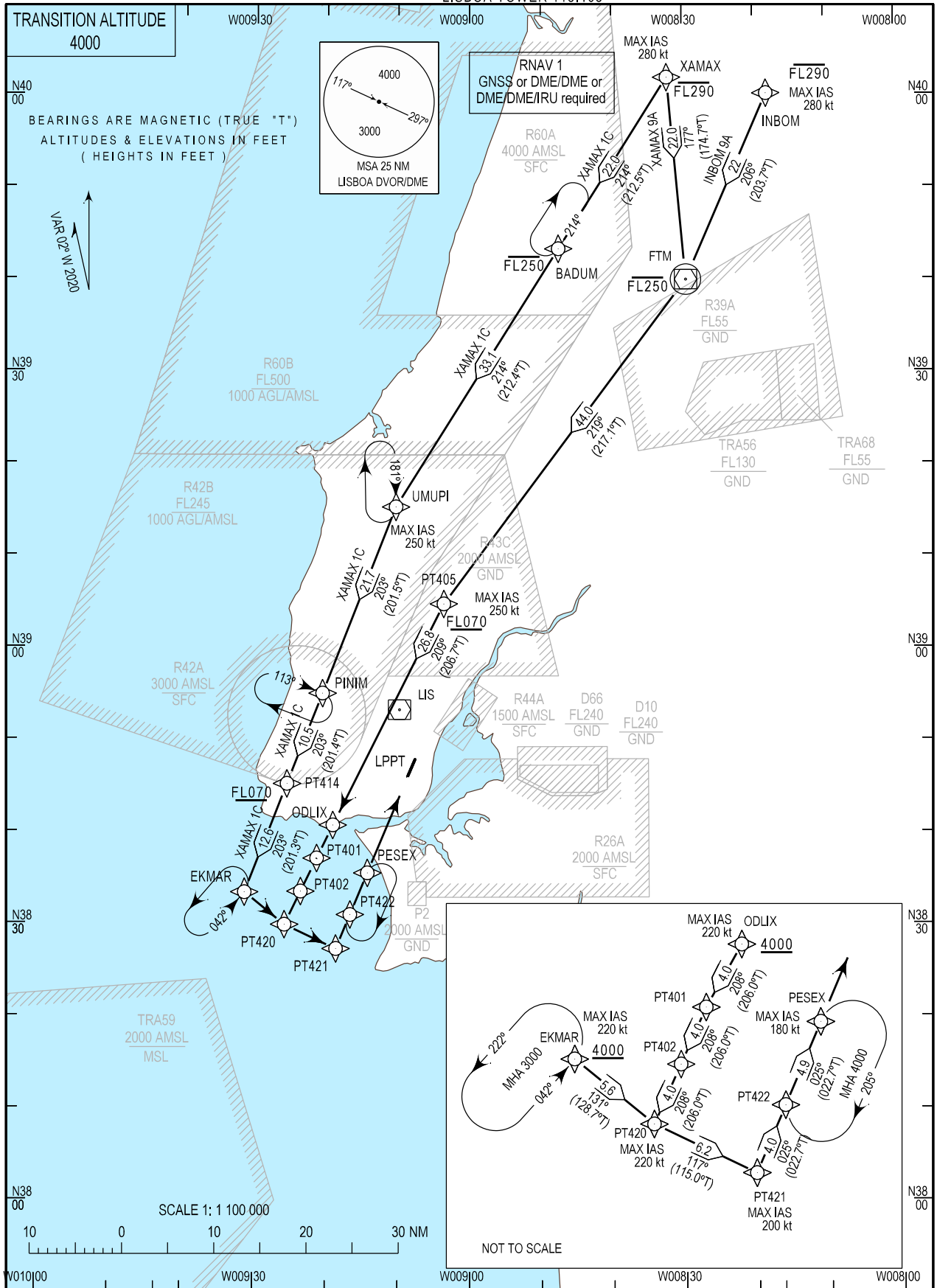


STANDARD ARRIVAL CHART - INSTRUMENT (STAR) - ICAO

LISBOA ARR INFORMATION 124.155
LISBOA CONTROL 123.980
LISBOA APPROACH 119.105
LISBOA ARRIVAL 125.130
LISBOA TOWER 118.105

LISBOA, Humberto Delgado (LPPT)
RNAV RWY 02
INBOM 9A, XAMAX 9A, XAMAX 1C



HLDGs BADUM, EKMAR, inbound track changed.

STANDARD INSTRUMENT ARRIVAL (STAR) RUNWAY 02
RNAV 1 – GNSS or DME/DME or DME/DME/IRU
Procedure Coding Table

STAR RNAV 1 INBOM 9A RWY 02										
Path Terminator	Waypoint			Course/Track MAG (True)	Dist NM	Turn Direction	Constraints		Nav Specs	Remarks
	Identifier	Flyover	Coordinates				Level	Speed		
IF	INBOM	No	400006.9084N 0081807.2063W	-	-	-	- FL290	280Kt	RNAV 1	
TF	FTM	Yes	393956.4527N 0082933.5366W	206 (203.7)	22.000	-	- FL250	280Kt	RNAV 1	Clearance limit: PESEX
TF	PT405	No	390444.8357N 0090336.1348W	219 (217.1)	43.970	Right	+FL070	250Kt	RNAV 1	
TF	ODLIX	No	384044.1220N 0091901.5023W	209 (206.7)	26.842	Left	+4000ft	220Kt	RNAV 1	
TF	PT401	No	383708.2488N 0092115.8332W	208 (206.0)	3.999	-	+4000ft	-	RNAV 1	
TF	PT402	No	383332.3345N 0092329.9441W	208 (206.0)	3.999	-	+4000ft	-	RNAV 1	
TF	PT420	No	382956.3065N 0092543.8749W	208 (206.0)	4.001	-	+4000ft	220Kt	RNAV 1	
TF	PT421	No	382719.2495N 0091835.1898W	117 (115.0)	6.190	Left	+4000ft	200Kt	RNAV 1	
TF	PT422	No	383100.9209N 0091637.3373W	025 (022.7)	4.000	Left	+4000ft	-	RNAV 1	
TF	PESEX	No	383532.4200N 0091412.6941W	025 (022.7)	4.900	-	+4000ft	180Kt	RNAV 1	
STAR RNAV 1 XAMAX 9A RWY 02										
Path Terminator	Waypoint			Course/Track MAG (True)	Dist NM	Turn Direction	Constraints		Nav Specs	Remarks
	Identifier	Flyover	Coordinates				Level	Speed		
IF	XAMAX	No	400151.9619N 0083210.3388W	-	-	-	- FL290	280Kt	RNAV 1	
TF	FTM	Yes	393956.4527N 0082933.5366W	177 (174.7)	22.000	-	- FL250	280Kt	RNAV 1	Clearance limit: PESEX
TF	PT405	No	390444.8357N 0090336.1348W	219 (217.1)	43.970	Right	+FL070	250Kt	RNAV 1	
TF	ODLIX	No	384044.1220N 0091901.5023W	209 (206.7)	26.842	Left	+4000ft	220Kt	RNAV 1	
TF	PT401	No	383708.2488N 0092115.8332W	208 (206.0)	3.999	-	+4000ft	-	RNAV 1	
TF	PT402	No	383332.3345N 0092329.9441W	208 (206.0)	3.999	-	+4000ft	-	RNAV 1	
TF	PT420	No	382956.3065N 0092543.8749W	208 (206.0)	4.001	-	+4000ft	220Kt	RNAV 1	
TF	PT421	No	382719.2495N 0091835.1898W	117 (115.0)	6.190	Left	+4000ft	200Kt	RNAV 1	
TF	PT422	No	383100.9209N 0091637.3373W	025 (022.7)	4.000	Left	+4000ft	-	RNAV 1	
TF	PESEX	No	383532.4200N 0091412.6941W	025 (022.7)	4.900	-	+4000ft	180Kt	RNAV 1	
STAR RNAV 1 XAMAX 1C RWY 02										
Path Terminator	Waypoint			Course/Track MAG (True)	Dist NM	Turn Direction	Constraints		Nav Specs	Remarks
	Identifier	Flyover	Coordinates				Level	Speed		
IF	XAMAX	No	400151.9619N 0083210.3388W	-	-	-	- FL290	280Kt	RNAV 1	
TF	BADUM	No	394317.1565N 0084730.2615W	214 (212.5)	22.000	-	- FL250	280Kt	RNAV 1	Clearance limit: PESEX. To be used pending on military conditions.
TF	UMUPI	No	391516.4617N 0091018.5515W	214 (212.4)	33.091	-	-	250Kt	RNAV 1	
TF	PINIM	No	385502.7041N 0092030.5482W	203 (201.5)	21.715	Left	-	-	RNAV 1	
TF	PT414	No	384513.7422N 0092525.2551W	203 (201.4)	10.531	-	+FL070	-	RNAV 1	
TF	EKMAR	No	383326.5606N 0093117.1991W	203 (201.3)	12.639	-	+4000ft	220Kt	RNAV 1	
TF	PT420	No	382956.3065N 0092543.8749W	131 (128.7)	5.591	Left	+4000ft	220Kt	RNAV 1	
TF	PT421	No	382719.2495N 0091835.1898W	117 (115.0)	6.190	Left	+4000ft	200Kt	RNAV 1	
TF	PT422	No	383100.9209N 0091637.3373W	025 (022.7)	4.000	Left	+4000ft	-	RNAV 1	
TF	PESEX	No	383532.4200N 0091412.6941W	025 (022.7)	4.900	-	+4000ft	180Kt	RNAV 1	