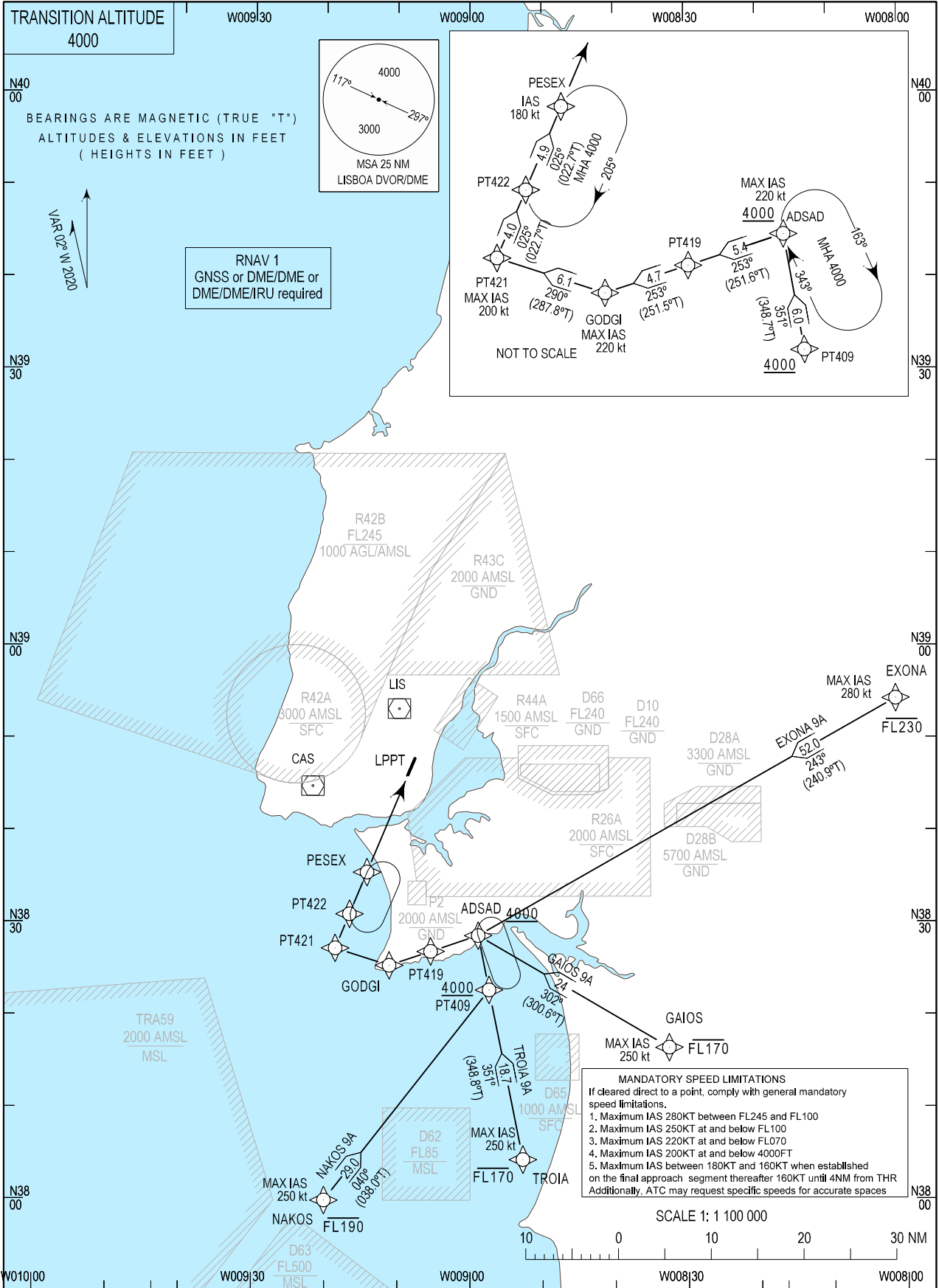


STANDARD ARRIVAL CHART - INSTRUMENT (STAR) - ICAO

LISBOA ARR INFORMATION 124.155  
 LISBOA CONTROL 123.980  
 LISBOA APPROACH 119.105  
 LISBOA ARRIVAL 125.130  
 LISBOA TOWER 118.105

LISBOA, Humberto Delgado (LPPT)  
 RNAV Rwy 02  
 EXONA 9A, GAIOS 9A  
 NAKOS 9A, TROIA 9A



MAG VAR changed. New Rwy designator.

STAR Procedure Coding Table

Lisboa STAR RNAV 1 EXONA 9A RWY 02

Path Terminator	Waypoint			Course/Track MAG (True)	Dist NM	Turn Direction	Constraints		Nav Specs	Remarks
	Identifier	Flyover	Coordinates				Level	Speed		
IF	EXONA	No	385415.8880N 0080100.0000W	-	-	-	-FL230	280Kt	RNAV 1	Clearance limit: PESEX
TF	ADSAD	No	382840.6458N 0085852.2709W	243 (240.9)	52.023	-	+4000ft	220Kt	RNAV 1	
TF	PT419	No	382657.3398N 0090525.4344W	253 (251.6)	5.426	Right	+4000ft	-	RNAV 1	
TF	GODGI	No	382526.8748N 0091108.3546W	253 (251.5)	4.736	-	+4000ft	220Kt	RNAV 1	
TF	PT421	No	382719.2495N 0091835.1898W	290 (287.8)	6.143	Right	+4000ft	200Kt	RNAV 1	
TF	PT422	No	383100.9209N 0091637.3373W	025 (022.7)	4.000	Right	+4000ft	-	RNAV 1	
TF	PESEX	No	383532.4200N 0091412.6941W	025 (022.7)	4.900	-	+4000ft	180Kt	RNAV 1	

Lisboa STAR RNAV 1 GAIOS 9A RWY 02

Path Terminator	Waypoint			Course/Track MAG (True)	Dist NM	Turn Direction	Constraints		Nav Specs	Remarks
	Identifier	Flyover	Coordinates				Level	Speed		
IF	GAIOS	No	381631.8849N 0083235.1908W	-	-	-	-FL170	250Kt	RNAV 1	Clearance limit: PESEX
TF	ADSAD	No	382840.6458N 0085852.2709W	302 (300.5)	23.967	-	+4000ft	220Kt	RNAV 1	
TF	PT419	No	382657.3398N 0090525.4344W	253 (251.6)	5.426	Left	+4000ft	-	RNAV 1	
TF	GODGI	No	382526.8748N 0091108.3546W	253 (251.5)	4.736	-	+4000ft	220Kt	RNAV 1	
TF	PT421	No	382719.2495N 0091835.1898W	290 (287.8)	6.143	Right	+4000ft	200Kt	RNAV 1	
TF	PT422	No	383100.9209N 0091637.3373W	025 (022.7)	4.000	Right	+4000ft	-	RNAV 1	
TF	PESEX	No	383532.4200N 0091412.6941W	025 (022.7)	4.900	-	+4000ft	180Kt	RNAV 1	

Lisboa STAR RNAV 1 NAKOS 9A RWY 02

Path Terminator	Waypoint			Course/Track MAG (True)	Dist NM	Turn Direction	Constraints		Nav Specs	Remarks
	Identifier	Flyover	Coordinates				Level	Speed		
IF	NAKOS	No	380000.0000N 0092004.1761W	-	-	-	-FL190	250Kt	RNAV 1	Clearance limit: PESEX
TF	PT409	No	382247.2141N 0085722.7787W	040 (038.0)	28.950	-	+4000ft	-	RNAV 1	
TF	ADSAD	No	382840.6458N 0085852.2709W	351 (348.7)	6.000	Left	+4000ft	220Kt	RNAV 1	
TF	PT419	No	382657.3398N 0090525.4344W	253 (251.6)	5.426	Left	+4000ft	-	RNAV 1	
TF	GODGI	No	382526.8748N 0091108.3546W	253 (251.5)	4.736	-	+4000ft	220Kt	RNAV 1	
TF	PT421	No	382719.2495N 0091835.1898W	290 (287.8)	6.143	Right	+4000ft	200Kt	RNAV 1	
TF	PT422	No	383100.9209N 0091637.3373W	025 (022.7)	4.000	Right	+4000ft	-	RNAV 1	
TF	PESEX	No	383532.4200N 0091412.6941W	025 (022.7)	4.900	-	+4000ft	180Kt	RNAV 1	

Lisboa STAR RNAV 1 TROIA 9A RWY 02

Path Terminator	Waypoint			Course/Track MAG (True)	Dist NM	Turn Direction	Constraints		Nav Specs	Remarks
	Identifier	Flyover	Coordinates				Level	Speed		
IF	TROIA	No	380423.7068N 0085244.9481W	-	-	-	-FL170	250Kt	RNAV 1	Clearance limit: PESEX
TF	PT409	No	382247.2141N 0085722.7787W	351 (348.8)	18.731	-	+4000ft	-	RNAV 1	
TF	ADSAD	No	382840.6458N 0085852.2709W	351 (348.7)	6.000	-	+4000ft	220Kt	RNAV 1	
TF	PT419	No	382657.3398N 0090525.4344W	253 (251.6)	5.426	Left	+4000ft	-	RNAV 1	
TF	GODGI	No	382526.8748N 0091108.3546W	253 (251.5)	4.736	-	+4000ft	220Kt	RNAV 1	
TF	PT421	No	382719.2495N 0091835.1898W	290 (287.8)	6.143	Right	+4000ft	200Kt	RNAV 1	
TF	PT422	No	383100.9209N 0091637.3373W	025 (022.7)	4.000	Right	+4000ft	-	RNAV 1	
TF	PESEX	No	383532.4200N 0091412.6941W	025 (022.7)	4.900	-	+4000ft	180Kt	RNAV 1	