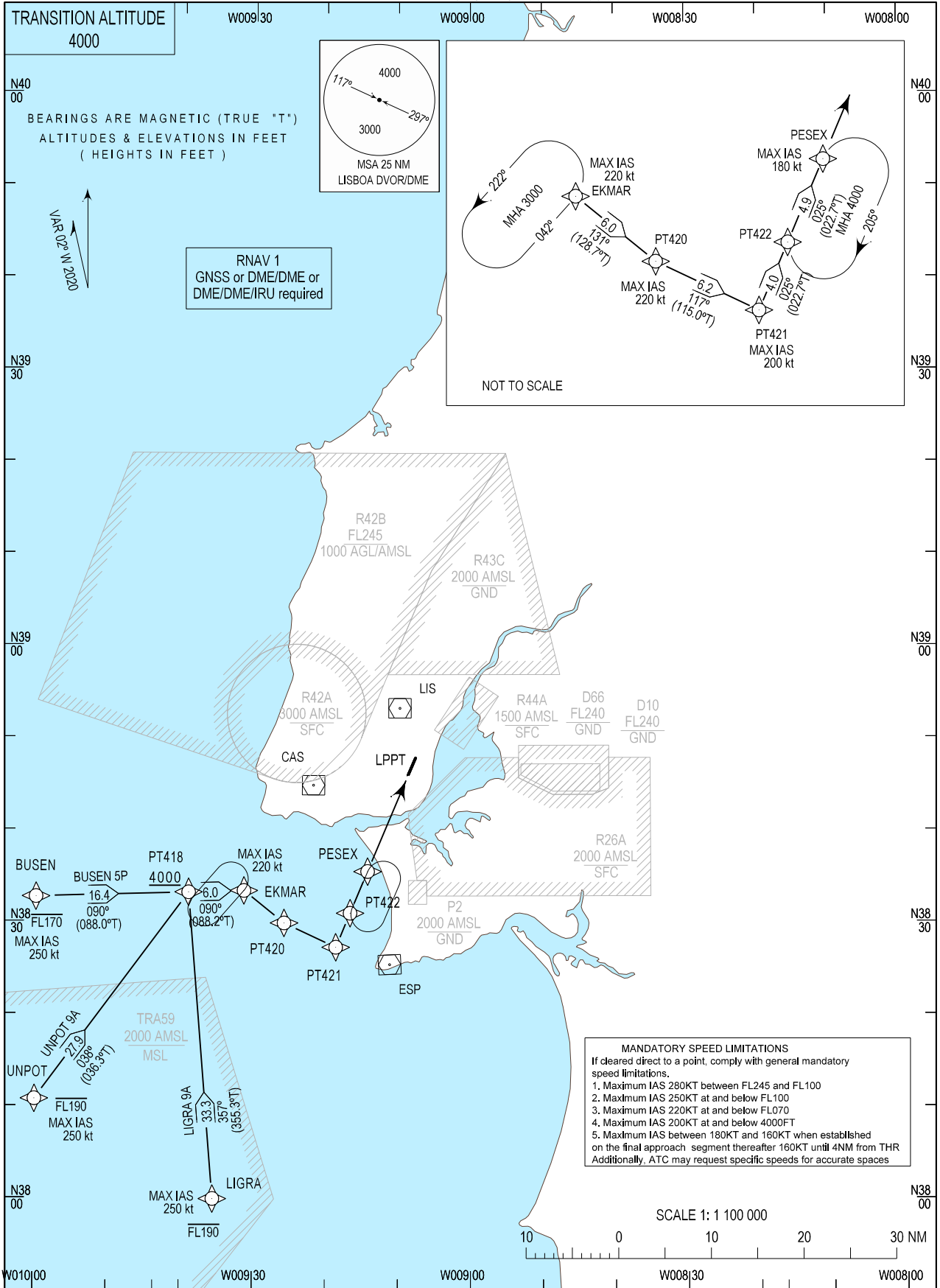


STANDARD ARRIVAL CHART -  
INSTRUMENT (STAR) - ICAO

LISBOA ARR INFORMATION 124.155  
LISBOA CONTROL 123.980  
LISBOA APPROACH 119.105  
LISBOA ARRIVAL 125.130  
LISBOA TOWER 118.105

LISBOA, Humberto Delgado (LPPT)  
RNAV RWY 02  
BUSEN 5P, LIGRA 9A, UNPOT 9A



MAG VAR changed. New RWY designator.

STANDARD INSTRUMENT ARRIVAL (STAR) RUNWAY 02  
RNAV 1 – GNSS or DME/DME or DME/DME/IRU  
Procedure Coding Table

Lisboa STAR RNAV 1 BUSEN 5P

Path Terminator	Waypoint			Course/Track MAG (True)	Dist NM	Turn Direction	Constraints		Nav Specs	Remarks
	Identifier	Flyover	Coordinates				Level	Speed		
IF	BUSEN	No	383241.9833N 0100000.0000W	-	-	-	- FL170	250Kt	RNAV 1	Clearance limit: PESEX  Critical DME: ESP, MTR and NSA at FL060 until 60NM
TF	PT418	No	383315.3808N 0093855.9127W	090 (088.0)	16.357	-	+4000ft	-	RNAV 1	
TF	EKMAR	No	383326.5606N 0093117.1991W	090 (088.2)	6.000	-	+4000ft	220Kt	RNAV 1	
TF	PT420	No	382956.3065N 0092543.8749W	131 (128.7)	5.591	Right	+4000ft	220Kt	RNAV 1	
TF	PT421	No	382719.2495N 0091835.1898W	117 (115.0)	6.190	Left	+4000ft	200Kt	RNAV 1	
TF	PT422	No	383100.9209N 0091637.3373W	025 (022.7)	4.000	Left	+4000ft	-	RNAV 1	
TF	PESEX	No	383532.4200N 0091412.6941W	025 (022.7)	4.900	-	+4000ft	180Kt	RNAV 1	

Lisboa STAR RNAV 1 LIGRA 9A

Path Terminator	Waypoint			Course/Track MAG (True)	Dist NM	Turn Direction	Constraints		Nav Specs	Remarks
	Identifier	Flyover	Coordinates				Level	Speed		
IF	LIGRA	No	380000.0000N 0093527.0620W	-	-	-	-FL190	250Kt	RNAV 1	Clearance limit: PESEX
TF	PT418	No	383315.3808N 0093855.9127W	357 (355.3)	33.334	-	+4000ft	-	RNAV 1	
TF	EKMAR	No	383326.5606N 0093117.1991W	090 (088.2)	6.000	Right	+4000ft	220Kt	RNAV 1	
TF	PT420	No	382956.3065N 0092543.8749W	131 (128.7)	5.591	Right	+4000ft	220Kt	RNAV 1	
TF	PT421	No	382719.2495N 0091835.1898W	117 (115.0)	6.190	Left	+4000ft	200Kt	RNAV 1	
TF	PT422	No	383100.9209N 0091637.3373W	025 (022.7)	4.000	Left	+4000ft	-	RNAV 1	
TF	PESEX	No	383532.4200N 0091412.6941W	025 (022.7)	4.900	-	+4000ft	180Kt	RNAV 1	

Lisboa STAR RNAV 1 UNPOT 9A

Path Terminator	Waypoint			Course/Track MAG (True)	Dist NM	Turn Direction	Constraints		Nav Specs	Remarks
	Identifier	Flyover	Coordinates				Level	Speed		
IF	UNPOT	No	381045.6294N 0100000.0000W	-	-	-	- FL190	250Kt	RNAV 1	Clearance limit: PESEX
TF	PT418	No	383315.3808N 0093855.9127W	038 (036.3)	27.920	-	+4000ft	-	RNAV 1	
TF	EKMAR	No	383326.5606N 0093117.1991W	090 (088.2)	6.000	Right	+4000ft	220Kt	RNAV 1	
TF	PT420	No	382956.3065N 0092543.8749W	131 (128.7)	5.591	Right	+4000ft	220Kt	RNAV 1	
TF	PT421	No	382719.2495N 0091835.1898W	117 (115.0)	6.190	Left	+4000ft	200Kt	RNAV 1	
TF	PT422	No	383100.9209N 0091637.3373W	024.5 (022.7)	4.000	Left	+4000ft	-	RNAV 1	
TF	PESEX	No	383532.4200N 0091412.6941W	025 (022.7)	4.900	-	+4000ft	180Kt	RNAV 1	