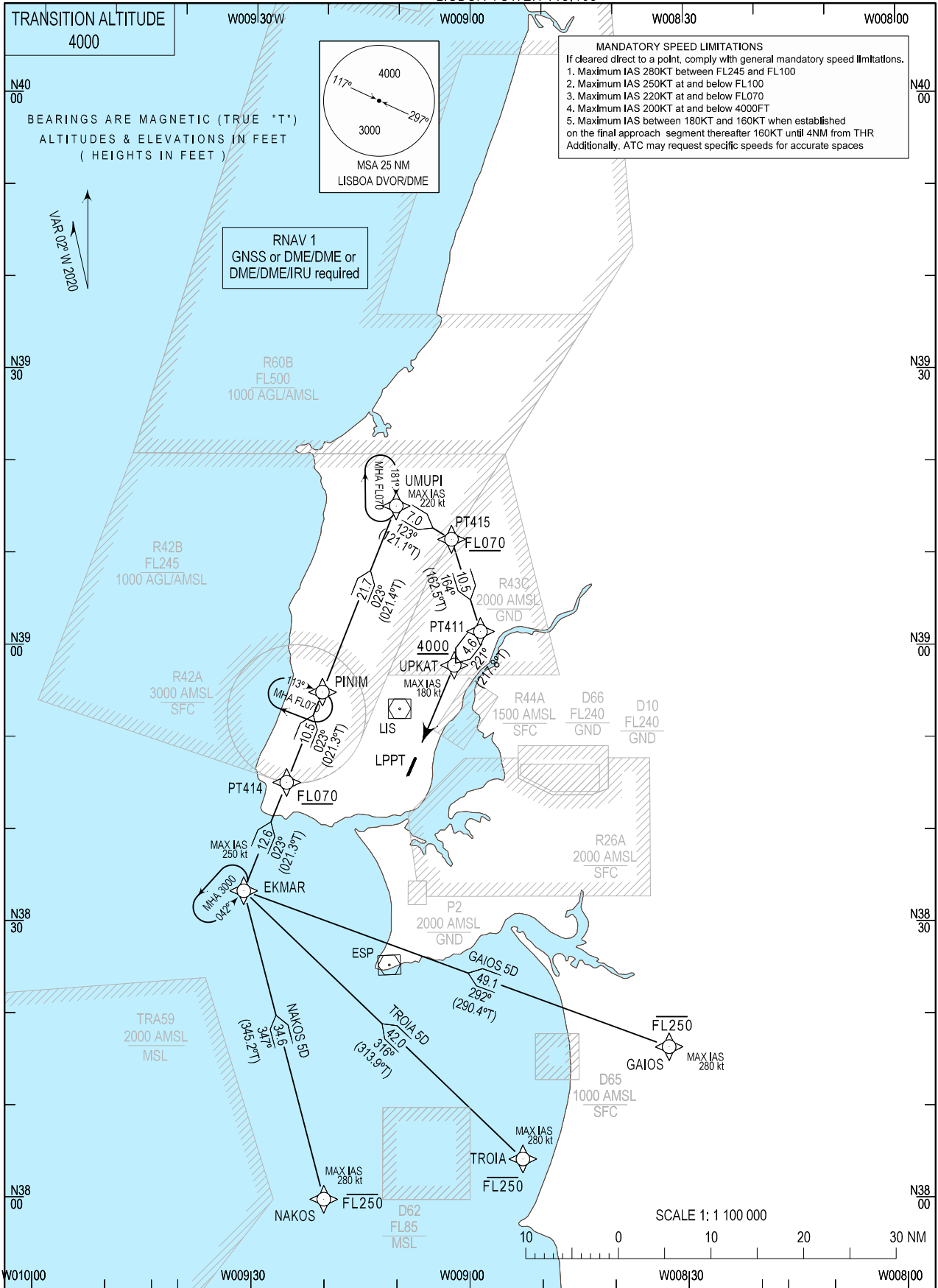


STANDARD ARRIVAL CHART - INSTRUMENT (STAR) - ICAO

LISBOA ARR INFORMATION 124.155
LISBOA CONTROL 123.980
LISBOA APPROACH 119.105
LISBOA ARRIVAL 125.130
LISBOA TOWER 118.105

LISBOA, Humberto Delgado (LPPT)
RNAV RWY 20
GAIOS 5D, NAKOS 5D, TROIA 5D



MAG VAR changed. New RWY designator.

STANDARD INSTRUMENT ARRIVAL (STAR) RUNWAY 20

RNAV 1 – GNSS or DME/DME or DME/DME/IRU

STAR RNAV 1 GAIOS 5D RWY 20

Procedure Coding Table

| Path Terminator | Waypoint | | | Course/Track MAG (True) | Dist NM | Turn Direction | Constraints | | Nav Specs | Remarks |
|-----------------|------------|---------|---------------------------|-------------------------------|---------|-------------------|-------------|-------|-----------|---------------------------|
| | Identifier | Flyover | Coordinates | | | | Level | Speed | | |
| IF | GAIOS | - | 381631.88N 0083235.19W | - | - | - | -FL250 | 280Kt | RNAV 1 | Clearance limit: UPKAT |
| TF | EKMAR | - | 383326.56N 0093117.20W | 292 (290.4) | 49.13 | - | - | 250Kt | RNAV 1 | |
| TF | PT414 | - | 384513.74N 0092525.26W | 023 (021.3) | 12.64 | Right | +FL070 | - | RNAV 1 | |
| TF | PINIM | - | 385502.70N 0092030.55W | 023 (021.3) | 10.53 | - | - | - | RNAV 1 | |
| TF | UMUPI | - | 391516.46N 0091018.55W | 023 (021.4) | 21.72 | - | - | 220Kt | RNAV 1 | |
| TF | PT415 | - | 391139.36N 0090235.77W | 123 (121.1) | 7.00 | Right | +FL070 | - | RNAV 1 | |
| TF | PT411 | - | 390139.34N 0085833.34W | 164 (162.5) | 10.47 | Right | - | - | RNAV 1 | |
| TF | UPKAT | - | 385759.04N 0090212.05W | 220 (217.8) | 4.64 | Right | +4000ft | 180Kt | RNAV 1 | |

STAR RNAV 1 NAKOS 5D RWY 20

| Path Terminator | Waypoint | | | Course/Track MAG (True) | Dist NM | Turn Direction | Constraints | | Nav Specs | Remarks |
|-----------------|------------|---------|---------------------------|-------------------------------|---------|-------------------|-------------|-------|-----------|---------------------------|
| | Identifier | Flyover | Coordinates | | | | Level | Speed | | |
| IF | NAKOS | - | 380000.00N 0092004.18W | - | - | - | -FL250 | 280Kt | RNAV 1 | Clearance limit: UPKAT |
| TF | EKMAR | - | 383326.56N 0093117.20W | 347 (345.2) | 34.56 | - | - | 250Kt | RNAV 1 | |
| TF | PT414 | - | 384513.74N 0092525.26W | 023 (021.3) | 12.64 | Right | +FL070 | - | RNAV 1 | |
| TF | PINIM | - | 385502.70N 0092030.55W | 023 (021.3) | 10.53 | - | - | - | RNAV 1 | |
| TF | UMUPI | - | 391516.46N 0091018.55W | 023 (021.4) | 21.72 | - | - | 220Kt | RNAV 1 | |
| TF | PT415 | - | 391139.36N 0090235.77W | 123 (121.1) | 7.00 | Right | +FL070 | - | RNAV 1 | |
| TF | PT411 | - | 390139.34N 0085833.34W | 164 (162.5) | 10.48 | Right | - | - | RNAV 1 | |
| TF | UPKAT | - | 385759.04N 0090212.05W | 220 (217.8) | 4.64 | Right | +4000ft | 180Kt | RNAV 1 | |

STAR RNAV 1 TROIA 5D RWY 20

| Path Terminator | Waypoint | | | Course/Track MAG (True) | Dist NM | Turn Direction | Constraints | | Nav Specs | Remarks |
|-----------------|------------|---------|----------------------------|-------------------------------|---------|-------------------|-------------|-------|-----------|---------------------------|
| | Identifier | Flyover | Coordinates | | | | Level | Speed | | |
| IF | TROIA | - | 380423.71N 00985244.95W | - | - | - | -FL250 | 280Kt | RNAV 1 | Clearance limit: UPKAT |
| TF | EKMAR | - | 383326.56N 0093117.20W | 316 (313.9) | 41.97 | - | - | 250Kt | RNAV 1 | |
| TF | PT414 | - | 384513.74N 0092525.26W | 023 (021.3) | 12.64 | Right | +FL070 | - | RNAV 1 | |
| TF | PINIM | - | 385502.70N 0092030.55W | 023 (021.3) | 10.53 | - | - | - | RNAV 1 | |
| TF | UMUPI | - | 391516.46N 0091018.55W | 023 (021.4) | 21.72 | - | - | 220Kt | RNAV 1 | |
| TF | PT415 | - | 391139.36N 0090235.77W | 123 (121.1) | 7.00 | Right | +FL070 | - | RNAV 1 | |
| TF | PT411 | - | 390139.34N 0085833.34W | 164 (162.5) | 10.47 | Right | - | - | RNAV 1 | |
| TF | UPKAT | - | 385759.04N 0090212.05W | 220 (217.8) | 4.64 | Right | +4000ft | 180Kt | RNAV 1 | |