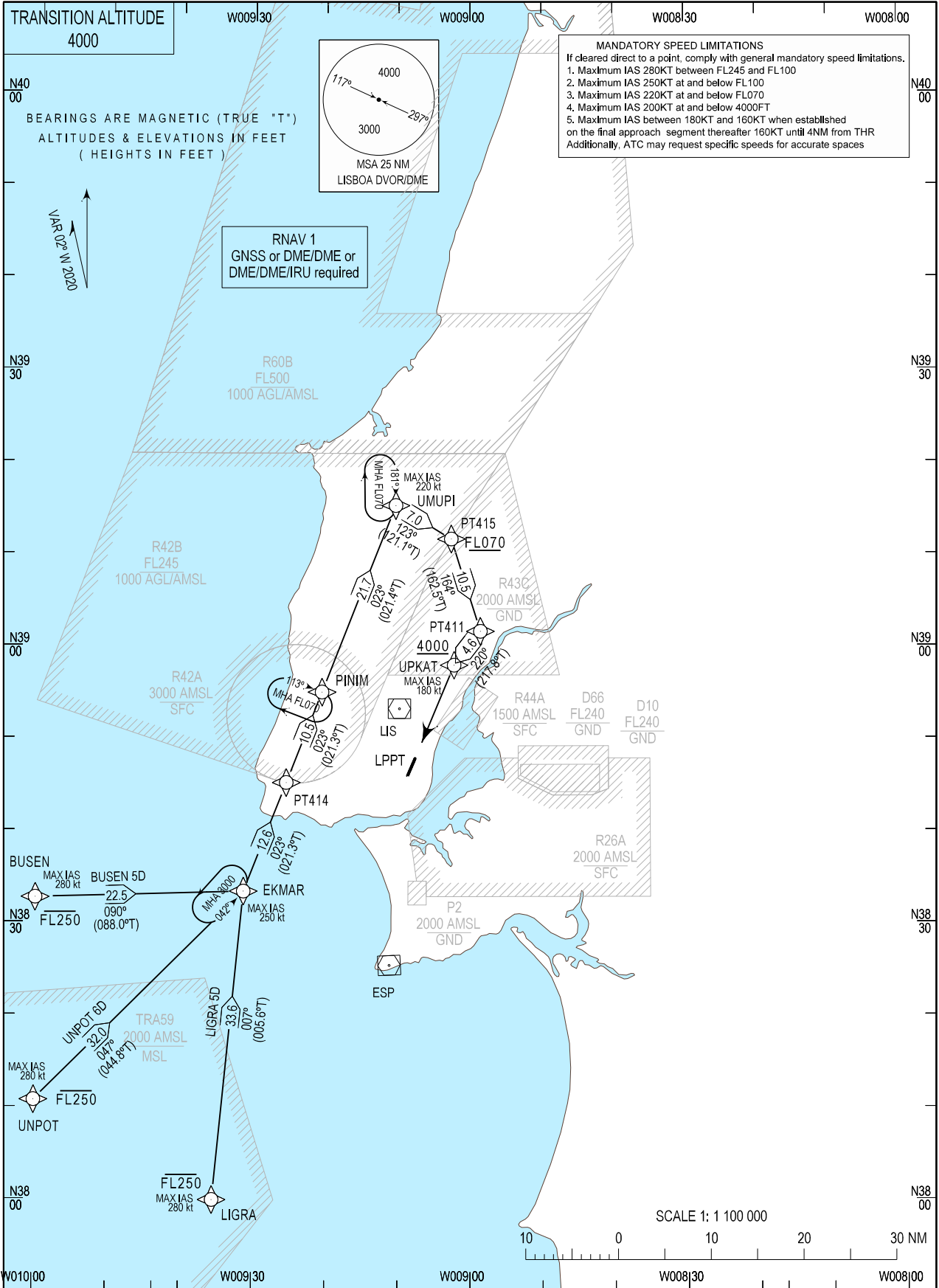


STANDARD ARRIVAL CHART - INSTRUMENT (STAR) - ICAO

LISBOA ARR INFORMATION 124.155
LISBOA CONTROL 123.980
LISBOA APPROACH 119.105
LISBOA ARRIVAL 125.130
LISBOA TOWER 118.105

LISBOA, Humberto Delgado (LPPT)
RNAV RWY 20
BUSEN 5D, LIGRA 5D, UNPOT 6D



MAG VAR changed. New RWY designator.

STANDARD INSTRUMENT ARRIVAL (STAR) RUNWAY 20

RNAV 1 – GNSS or DME/DME or DME/DME/IRU

STAR RNAV 1 BUSEN 5D RWY 20

Procedure Coding Table

Path Terminator	Waypoint			Course/Track MAG (True)	Dist NM	Turn Direction	Constraints		Nav Specs	Remarks
	Identifier	Flyover	Coordinates				Level	Speed		
IF	BUSEN	-	383326.56N 0093117.20W	-	-	-	-FL250	280Kt	RNAV 1	Clearance limit: UPKAT
TF	EKMAR	-	383326.56N 0093117.20W	090 (088.0)	22.54	-	-	250Kt	RNAV 1	
TF	PT414	-	384513.74N 0092525.26W	023 (021.3)	12.64	Left	-	-	RNAV 1	
TF	PINIM	-	385502.70N 0092030.55W	023 (021.3)	10.53	-	-	-	RNAV 1	
TF	UMUPI	-	391516.46N 0091018.55W	023 (021.4)	21.72	-	-	220Kt	RNAV 1	
TF	PT415	-	391139.36N 0090235.77W	123 (121.1)	7.00	Right	+FL070	-	RNAV 1	
TF	PT411	-	390139.34N 0085833.34W	164 (162.5)	10.47	Right	-	-	RNAV 1	
TF	UPKAT	-	385759.04N 0090212.05W	220 (217.8)	4.64	Right	+4000ft	180Kt	RNAV 1	

STAR RNAV 1 LIGRA 5D RWY 20

Path Terminator	Waypoint			Course/Track MAG (True)	Dist NM	Turn Direction	Constraints		Nav Specs	Remarks
	Identifier	Flyover	Coordinates				Level	Speed		
IF	LIGRA	-	380000.00N 0093527.06W	-	-	-	-FL250	280Kt	RNAV 1	Clearance limit: UPKAT
TF	EKMAR	-	383326.56N 0093117.20W	007 (005.6)	33.57	-	-	250Kt	RNAV 1	
TF	PT414	-	384513.74N 0092525.26W	023 (021.3)	12.64	Right	-	-	RNAV 1	
TF	PINIM	-	385502.70N 0092030.55W	023 (021.3)	10.53	-	-	-	RNAV 1	
TF	UMUPI	-	391516.46N 0091018.55W	023 (021.4)	21.72	-	-	220Kt	RNAV 1	
TF	PT415	-	391139.36N 0090235.77W	123 (121.1)	7.00	Right	+FL070	-	RNAV 1	
TF	PT411	-	390139.34N 0085833.34W	164 (162.5)	10.47	Right	-	-	RNAV 1	
TF	UPKAT	-	385759.04N 0090212.05W	220 (217.8)	4.64	Right	+4000ft	180Kt	RNAV 1	

STAR RNAV 1 UNPOT 6D RWY 20

Path Terminator	Waypoint			Course/Track MAG (True)	Dist NM	Turn Direction	Constraints		Nav Specs	Remarks
	Identifier	Flyover	Coordinates				Level	Speed		
IF	UNPOT	-	381045.63N 0100000.00W	-	-	-	-FL250	280Kt	RNAV 1	Clearance limit: UPKAT
TF	EKMAR	-	383326.56N 0093117.20W	047 (044.8)	31.99	-	-	250Kt	RNAV 1	
TF	PT414	-	384513.74N 0092525.26W	023 (021.3)	12.64	Left	-	-	RNAV 1	
TF	PINIM	-	385502.70N 0092030.55W	023 (021.3)	10.53	-	-	-	RNAV 1	
TF	UMUPI	-	391516.46N 0091018.55W	023 (021.4)	21.72	-	-	220Kt	RNAV 1	
TF	PT415	-	391139.36N 0090235.77W	123 (121.1)	7.00	Right	+FL070	-	RNAV 1	
TF	PT411	-	390139.34N 0085833.34W	165(162.5)	10.47	Right	-	-	RNAV 1	
TF	UPKAT	-	385759.04N 0090212.05W	220 (217.8)	4.64	Right	+4000ft	180Kt	RNAV 1	