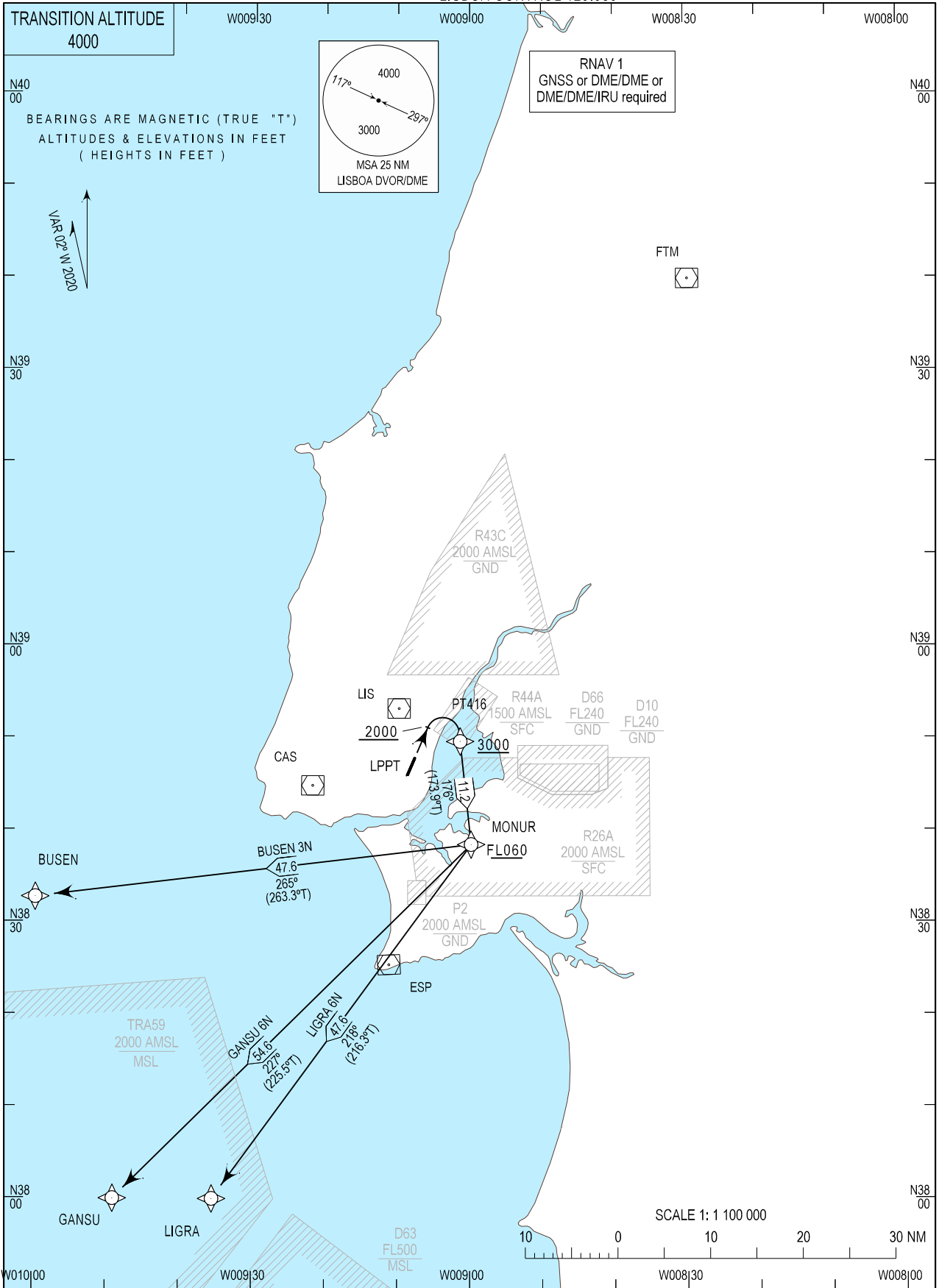


STANDARD DEPARTURE CHART -  
INSTRUMENT (SID) - ICAO

LISBOA DEP INFORMATION 121.955  
LISBOA TOWER 118.105  
LISBOA APPROACH 119.105  
LISBOA CONTROL 123.980

LISBOA, Humberto Delgado (LPPT)  
RNAV RWY 02  
BUSEN 3N, GANSU 6N, LIGRA 6N



MAG VAR changed. New RWY designator.

SID Procedure Coding Table										
Lisboa SID RNAV 1 RWY 02 - BUSEN 3N										
Path Terminator	Waypoint			Course/Track MAG (True)	Dist NM	Turn Direction	Constraints		Nav Specs	Remarks
	Identifier	Flyover	Coordinates				Level	Speed		
CA	-	-	-	025 (022.7)	-	-	+2000ft	-	RNAV 1	
DF	PT416	-	384941.30N 0090118.48W	-	-	Right	+3000ft	-	RNAV 1	
TF	MONUR	-	383829.92N 0085947.62W	176 (173.9)	11.24	Right	+FL060	-	RNAV 1	
TF	BUSEN	-	383241.98N 0100000.00W	265(263.3)	47.56	Right	-	-	RNAV 1	

Designator	Route	After Take-off		Remarks
		Climb to ALT/FL	Contact	
<b>BUSEN 3N</b>	Climb straight ahead. At or above 2000ft QNH turn right to PT416 - MONUR - BUSEN.	FL060	LISBOA APPROACH. When passing 1000ft QNH mentioning only the call sign and passing altitude. 119.105 MHz as announced by ATIS departure.	Critical DME: ESP, MTR and NSA at FL060 until 60 NM.

SID Procedure Coding Table										
Lisboa SID RNAV 1 RWY 02 - GANSU 6N										
Path Terminator	Waypoint			Course/Track MAG (True)	Dist NM	Turn Direction	Constraints		Nav Specs	Remarks
	Identifier	Flyover	Coordinates				Level	Speed		
CA	-	-	-	025 (022.7)	-	-	+2000ft	-	RNAV 1	
DF	PT416	-	384941.30N 0090118.48W	-	-	Right	+3000ft	-	RNAV 1	
TF	MONUR	-	383829.92N 0085947.62W	176 (173.9)	11.24	Right	+FL060	-	RNAV 1	
TF	GANSU	-	380000.00N 0094903.18W	227 (225.5)	54.61	Right	-	-	RNAV 1	

Designator	Route	After Take-off		Remarks
		Climb to ALT/FL	Contact	
<b>GANSU 6N</b>	Climb straight ahead. At or above 2000ft QNH turn right to PT PT416 - MONUR - GANSU.	FL060	LISBOA APPROACH. When passing 1000ft QNH mentioning only the call sign and passing altitude. 119.105 MHz as announced by ATIS departure.	-

SID Procedure Coding Table										
Lisboa SID RNAV 1 RWY 02 - LIGRA 6N										
Path Terminator	Waypoint			Course/Track MAG (True)	Dist NM	Turn Direction	Constraints		Nav Specs	Remarks
	Identifier	Flyover	Coordinates				Level	Speed		
CA	-	-	-	025 (022.7)	-	-	+2000ft	-	RNAV 1	
DF	PT416	-	384941.30N 0090118.48W	-	-	Right	+3000ft	-	RNAV 1	
TF	MONUR	-	383829.92N 0085947.62W	176 (173.9)	11.24	Right	+FL060	-	RNAV 1	
TF	LIGRA	-	380000.00N 0093527.06W	218 (216.3)	47.61	Right	-	-	RNAV 1	

Designator	Route	After Take-off		Remarks
		Climb to ALT/FL	Contact	
<b>LIGRA 6N</b>	Climb straight ahead. At or above 2000ft QNH turn right to PT416 - MONUR- LIGRA.	FL060	LISBOA APPROACH. When passing 1000ft QNH mentioning only the call sign and passing altitude. 119.105 MHz as announced by ATIS departure.	-