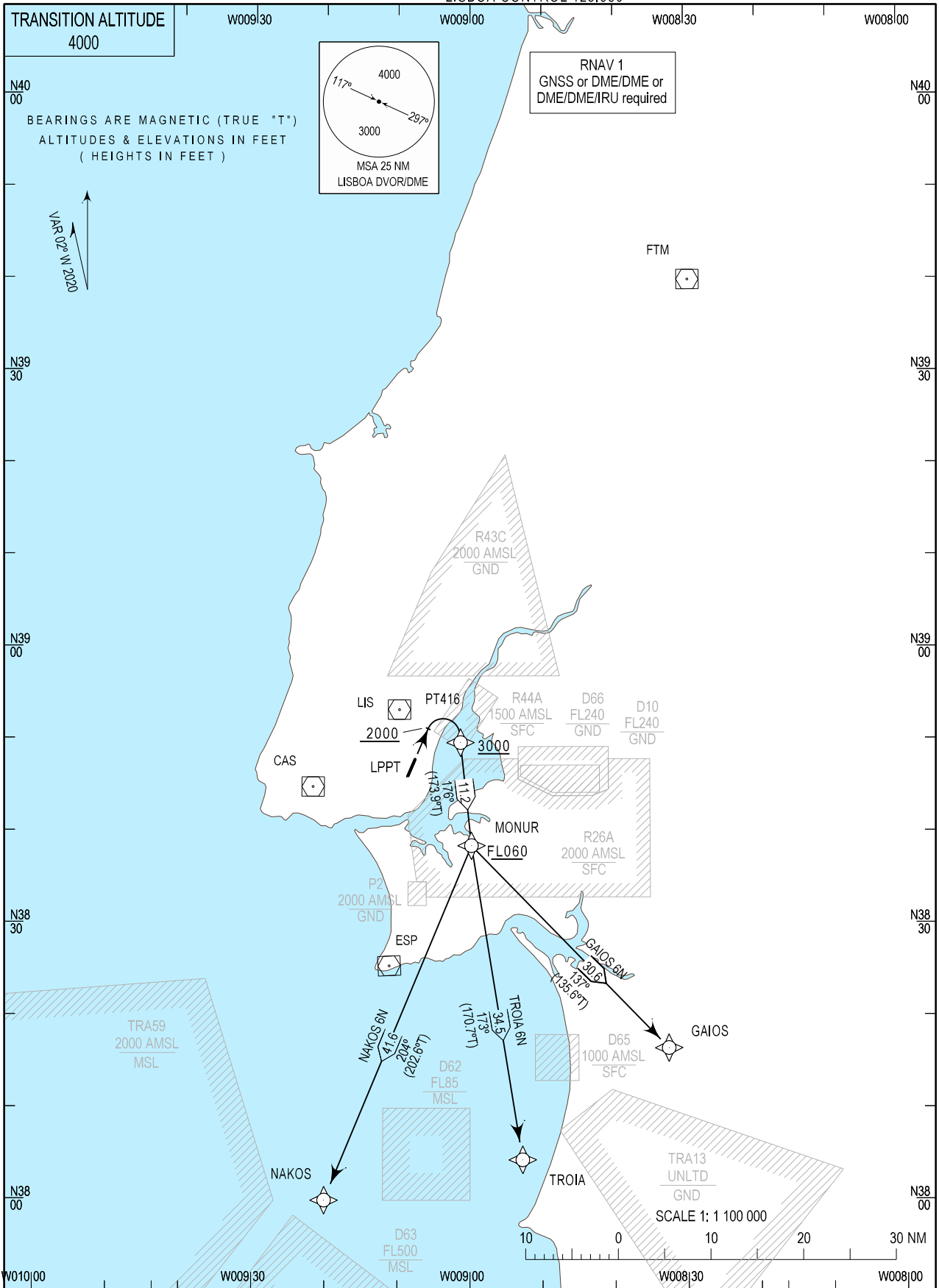


STANDARD DEPARTURE CHART -  
INSTRUMENT (SID) - ICAO

LISBOA DEP INFORMATION 121.955  
LISBOA TOWER 118.105  
LISBOA APPROACH 119.105  
LISBOA CONTROL 123.980

LISBOA, Humberto Delgado (LPPT)  
RNAV RWY 02  
GAIOS 6N, NAKOS 6N, TROIA 6N



MAG VAR changed. New RWY designator.

SID Procedure Coding Table										
Lisboa SID RNAV 1 GAIOS 6N										
Path Terminator	Waypoint			Course/Track MAG (True)	Dist NM	Turn Direction	Constraints		Nav Specs	Remarks
	Identifier	Flyover	Coordinates				Level	Speed		
CA	-	-	-	025 (022.7)	-	-	+2000ft	-	RNAV 1	-
DF	PT416	-	384941.30N 0090118.48W	-	-	Right	+3000ft	-	RNAV 1	
TF	MONUR	-	383829.92N 0085947.62W	176 (173.9)	11.24	Right	+FL060	-	RNAV 1	
TF	GAIOS	-	381631.88N 0083235.19W	137 (135.6)	30.63	Left	-	-	RNAV 1	

Designator	Route	After Take-off		Remarks
		Climb to ALT/FL	Contact	
<b>GAIOS 6N</b>	Climb straight ahead. At or above 2000ft QNH turn right to PT416 - MONUR-GAIOS.	FL060	LISBOA APPROACH. When passing 1000ft QNH mentioning only the call sign and passing altitude. 119.105 MHz as announced by ATIS departure.	-

SID Procedure Coding Table										
Lisboa SID RNAV 1 NAKOS 6N										
Path Terminator	Waypoint			Course/Track MAG (True)	Dist NM	Turn Direction	Constraints		Nav Specs	Remarks
	Identifier	Flyover	Coordinates				Level	Speed		
CA	-	-	-	025 (022.7)	-	-	+2000ft	-	RNAV 1	-
DF	PT416	-	384941.30N 0090118.48W	-	-	Right	+3000ft	-	RNAV 1	
TF	MONUR	-	383829.92N 0085947.62W	176 (173.9)	11.24	Right	+FL060	-	RNAV 1	
TF	NAKOS	-	380000.00N 0092004.18W	204 (202.6)	41.64	Right	-	-	RNAV 1	

Designator	Route	After Take-off		Remarks
		Climb to ALT/FL	Contact	
<b>NAKOS 6N</b>	Climb straight ahead. At or above 2000ft QNH turn right to PT416 - MONUR-NAKOS.	FL060	LISBOA APPROACH. When passing 1000ft QNH mentioning only the call sign and passing altitude. 119.105 MHz as announced by ATIS departure.	-

SID Procedure Coding Table										
Lisboa SID RNAV 1 TROIA 6N										
Path Terminator	Waypoint			Course/Track MAG (True)	Dist NM	Turn Direction	Constraints		Nav Specs	Remarks
	Identifier	Flyover	Coordinates				Level	Speed		
CA	-	-	-	025 (022.7)	-	-	+2000ft	-	RNAV 1	-
DF	PT416	-	384941.30N 0090118.48W	-	-	Right	+3000ft	-	RNAV 1	
TF	MONUR	-	383829.92N 0085947.62W	176 (173.9)	11.24	Right	+FL060	-	RNAV 1	
TF	TROIA	-	380423.71N 0085244.95W	173 (170.7)	34.52	-	-	-	RNAV 1	

Designator	Route	After Take-off		Remarks
		Climb to ALT/FL	Contact	
<b>TROIA 6N</b>	Climb straight ahead. At or above 2000ft QNH turn right to PT416 - MONUR-TROIA.	FL060	LISBOA APPROACH. When passing 1000ft QNH mentioning only the call sign and passing altitude. 119.105 MHz as announced by ATIS departure.	-