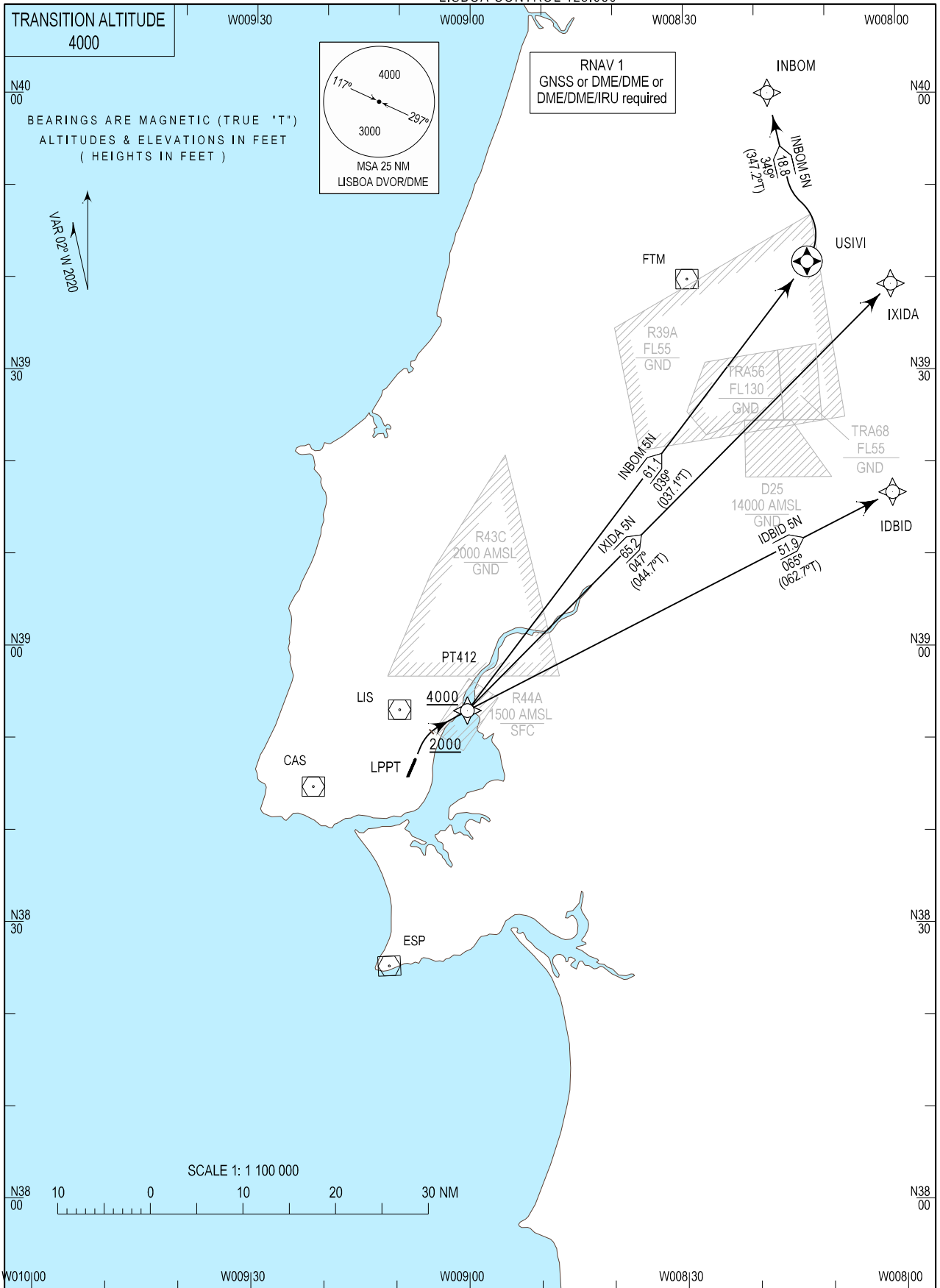


STANDARD DEPARTURE CHART -
INSTRUMENT (SID) - ICAO

LISBOA DEP INFORMATION 121.955
LISBOA TOWER 118.105
LISBOA APPROACH 119.105
LISBOA CONTROL 123.980

LISBOA, Humberto Delgado (LPPT)
RNAV RWY 02
IDBID 5N, INBOM 5N, IXIDA 5N



MAG VAR changed. New RWY designator.

| SID Procedure Coding Table | | | | | | | | | | |
|-------------------------------------|------------|---------|---------------------------|----------------------------|---------|-------------|-------------|-------|-----------|---------|
| Lisboa SID RNAV 1 RWY 02 - IDBID 5N | | | | | | | | | | |
| Path Terminator | Waypoint | | | Course/Track MAG (True) | Dist NM | Turn Direct | Constraints | | Nav Specs | Remarks |
| | Identifier | Flyover | Coordinates | | | | Level | Speed | | |
| CA | - | - | - | 025 (022.7) | - | - | +2000ft | - | RNAV 1 | - |
| DF | PT412 | - | 385310.45N 0090022.60W | - | - | Right | +4000ft | - | RNAV 1 | |
| TF | IDBID | - | 391641.60N 0080100.00W | 065 (062.7) | 51.86 | Right | - | - | RNAV 1 | |

| Designator | Route | After Take-off | | Remarks |
|-----------------|--|-----------------|--|---|
| | | Climb to ALT/FL | Contact | |
| IDBID 5N | Climb straight ahead. At or above 2000ft QNH turn right to PT412- IDBID. | FL060 | LISBOA APPROACH. When passing 1000ft QNH mentioning only the call sign and passing altitude. 119.105 MHz as announced by ATIS departure. | Above FL245 to UREDI and OGERO. Below FL245 to PORTA. |

| SID Procedure Coding Table | | | | | | | | | | |
|-------------------------------------|------------|---------|---------------------------|----------------------------|---------|----------------|-------------|-------|-----------|---------|
| Lisboa SID RNAV 1 RWY 02 - INBOM 5N | | | | | | | | | | |
| Path Terminator | Waypoint | | | Course/Track MAG (True) | Dist NM | Turn Direction | Constraints | | Nav Specs | Remarks |
| | Identifier | Flyover | Coordinates | | | | Level | Speed | | |
| CA | - | - | - | 025 (022.7) | - | - | +2000ft | - | RNAV 1 | - |
| DF | PT412 | - | 385310.45N 0090022.60W | - | - | Right | +4000ft | - | RNAV 1 | |
| TF | USIVI | Yes | 394147.14N 0081241.32W | 039 (037.1) | 61.07 | - | - | - | RNAV 1 | |
| TF | INBOM | - | 400006.91N 0081807.21W | 349 (347.2) | 18,79 | Left | - | - | RNAV 1 | |

| Designator | Route | After Take-off | | Remarks |
|-----------------|---|-----------------|--|---------|
| | | Climb to ALT/FL | Contact | |
| INBOM 5N | Climb straight ahead. At or above 2000ft QNH turn right to PT412- USIVI- INBOM. | FL060 | LISBOA APPROACH. When passing 1000ft QNH mentioning only the call sign and passing altitude. 119.105 MHz as announced by ATIS departure. | - |

| SID Procedure Coding Table | | | | | | | | | | |
|-------------------------------------|------------|---------|---------------------------|----------------------------|---------|----------------|-------------|-------|-----------|---------|
| Lisboa SID RNAV 1 RWY 02 - IXIDA 5N | | | | | | | | | | |
| Path Terminator | Waypoint | | | Course/Track MAG (True) | Dist NM | Turn Direction | Constraints | | Nav Specs | Remarks |
| | Identifier | Flyover | Coordinates | | | | Level | Speed | | |
| CA | - | - | - | 025 (022.7) | - | - | +2000ft | - | RNAV 1 | - |
| DF | PT412 | - | 385310.45N 0090022.60W | - | - | Right | +4000ft | - | RNAV 1 | |
| TF | IXIDA | - | 393918.46N 0080100.00W | 047 (044.7) | 65.20 | - | - | - | RNAV 1 | |

| Designator | Route | After Take-off | | Remarks |
|-----------------|--|-----------------|--|---|
| | | Climb to ALT/FL | Contact | |
| IXIDA 5N | Climb straight ahead. At or above 2000ft QNH turn right to PT412- IXIDA. | FL060 | LISBOA APPROACH. When passing 1000ft QNH mentioning only the call sign and passing altitude. 119.105 MHz as announced by ATIS departure. | Above FL245 to TOSDI. Below FL245 to RIVRO. |