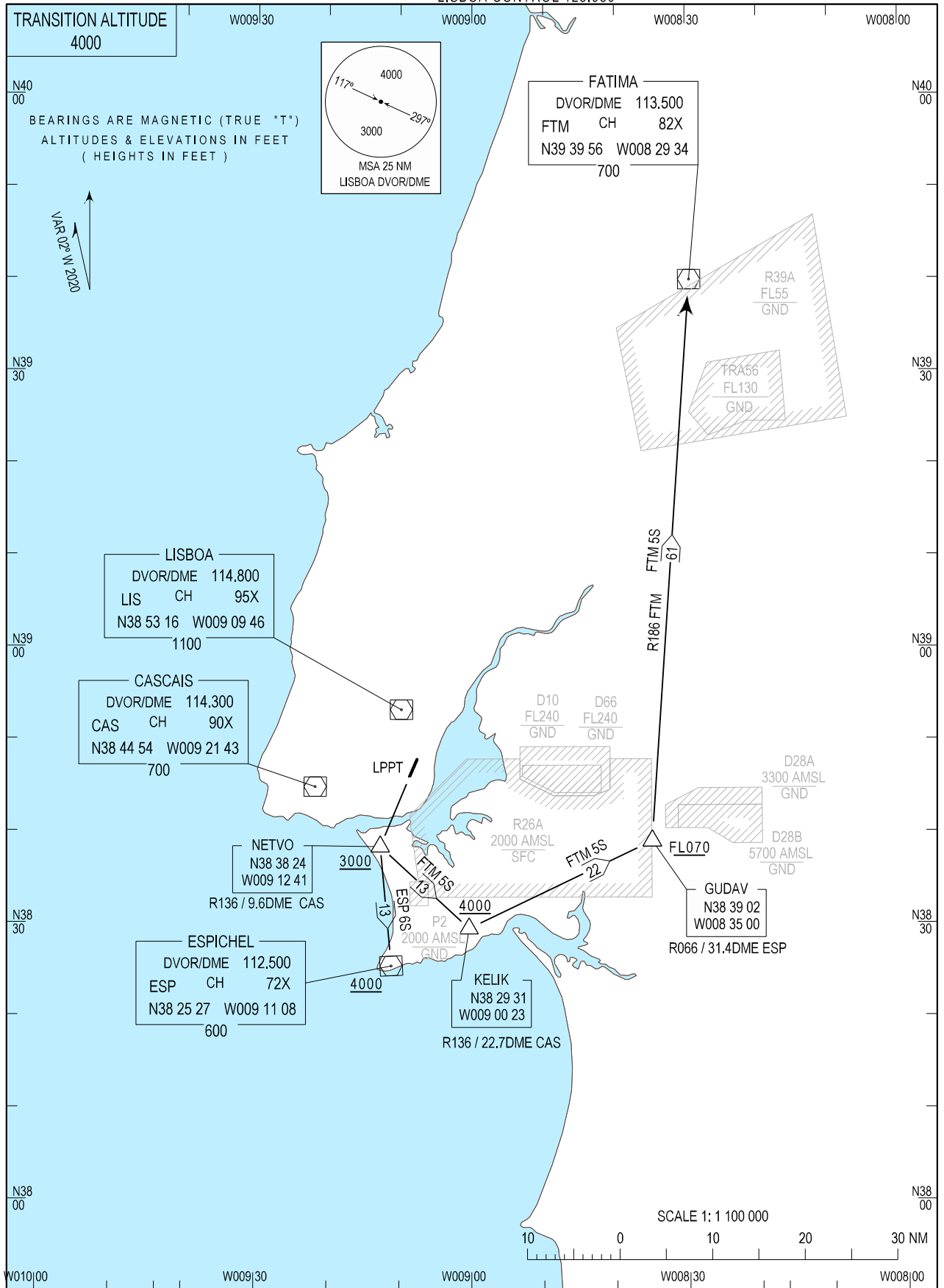


STANDARD DEPARTURE CHART - INSTRUMENT (SID) - ICAO

LISBOA DEP INFORMATION 121.955  
 LISBOA TOWER 118.105  
 LISBOA APPROACH 119.105  
 LISBOA CONTROL 123.980

LISBOA, Humberto Delgado (LPPT)  
 RWY 20  
 ESP 6S, FTM 5S



MAG VAR changed. New RWY designator.

STANDARD INSTRUMENT DEPARTURE (SID) RWY 20

Designator	Route	After Take-off		Remarks
		Climb to ALT/FL	Contact	
<b>ESP6S</b>	Climb straight ahead to position NETVO (RDL136 9.6 NM CAS DVOR/DME +3000 ft). Turn left to intercept and proceed on RDL 357 ESP to position ESP DVOR/DME +4000ft.	FL060	LISBOA APPROACH. When passing 1000ft QNH mentioning only the call sign and passing altitude. 119.105 MHz as announced by ATIS departure.	-
<b>FTM5S</b>	Climb straight ahead to position NETVO (RDL136 9.6 NM CAS DVOR/DME +3000 ft). Turn left to intercept and proceed on RDL 136 CAS to position KELIK. (RDL136 22.7 NM CAS DVOR/DME +4000 ft). Turn left to intercept and proceed on RDL 066 ESP to GUDAV (RDL066 31.4 NM ESP DVOR/DME + FL070). Turn left to intercept and proceed on RDL 186 FTM to FTM DVOR/DME.	FL060	LISBOA APPROACH. When passing 1000ft QNH mentioning only the call sign and passing altitude. 119.105 MHz as announced by ATIS departure.	-