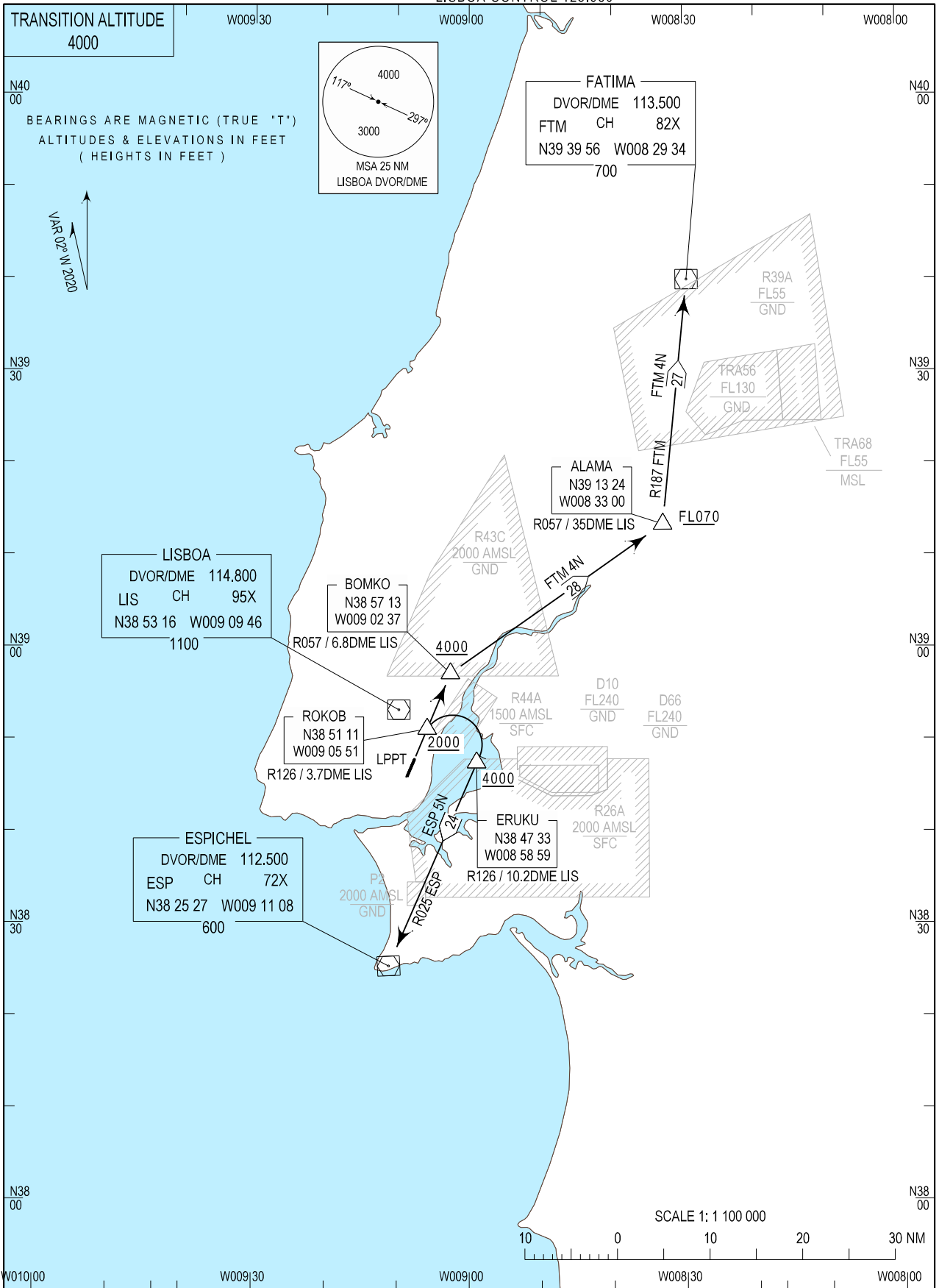


STANDARD DEPARTURE CHART -
INSTRUMENT (SID) - ICAO

LISBOA DEP INFORMATION 121.955
LISBOA TOWER 118.105
LISBOA APPROACH 119.105
LISBOA CONTROL 123.980

LISBOA, Humberto Delgado (LPPT)
RWY 02
ESP 5N, FTM 4N



STANDARD INSTRUMENT DEPARTURE (SID) RWY 02

Designator	Route	After Take-off		Remarks
		Climb to ALT/FL	Contact	
ESP5N	Climb straight ahead to position ROKOB (RDL126 3.7 NM LIS DVOR/DME +2000 ft). Turn right to intercept and proceed on RDL 126 LIS to position ERUKU (RDL126 10.2 NM LIS DVOR/DME +4000 ft). Turn right to intercept and proceed on RDL 025 ESP to ESP DVOR/DME	FL060	LISBOA APPROACH. When passing 1000ft QNH mentioning only the call sign and passing altitude. 119.105 MHz as announced by ATIS departure.	-
FTM4N	Climb straight ahead to position ROKOB (RDL126 3.7 NM LIS DVOR/DME +2000 ft). Continue straight ahead to position BOMKO (RDL 057 6.8 NM LIS DVOR/DME +4000ft). Turn right to intercept and proceed on RDL 057 LIS to position ALAMA (RDL057 35.0 NM LIS DVOR/DME +FL070). Turn left to intercept and proceed on RDL 187 FTM to FTM DVOR/DME.	FL060	LISBOA APPROACH. When passing 1000ft QNH mentioning only the call sign and passing altitude. 119.105 MHz as announced by ATIS departure.	-