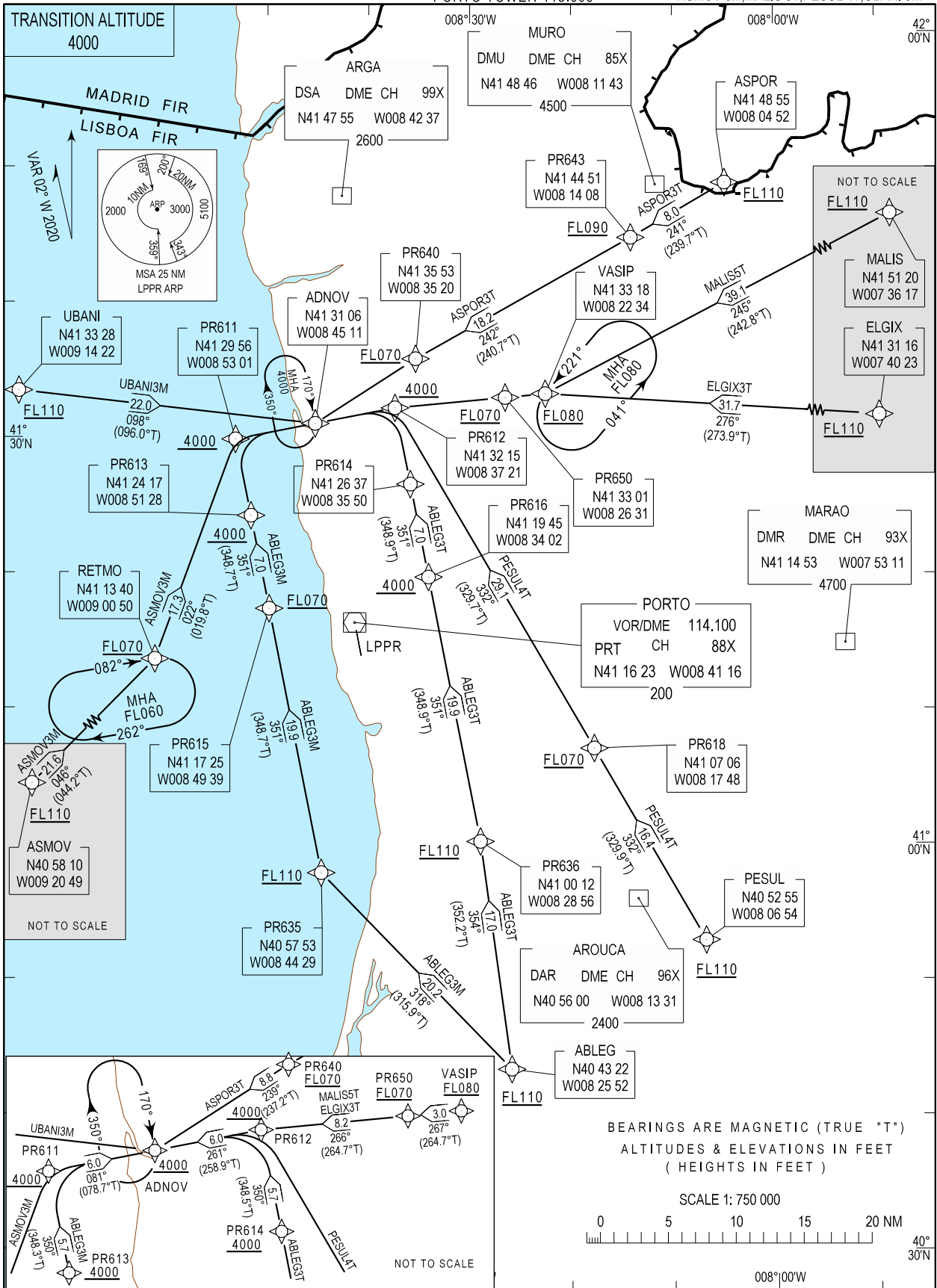


STANDARD ARRIVAL CHART -
INSTRUMENT (STAR) - ICAO

PORTO ARR INFORMATION 124.305
LISBOA CONTROL 132.305
PORTO APPROACH 120.910
PORTO TOWER 118.005

PORTO, Francisco Sá Carneiro (LPPR)
RNAV RWY17
ABLEG 3M, ABLEG 3T, ASPOR 3T, ELGIX 3T
ASMOV 3M, MALIS 5T, PESUL 4T, UBANI 3M



STAR Procedure Coding Table

Path Terminator	Waypoint			Course/Track MAG (True)	Dist NM	Turn Direction	Constraints		Nav Specs	Remarks
	Identifier	Flyover	Coordinates				Level	Speed		
Porto STAR RNAV 1 RWY 17 – ABLEG 3M										
IF	ABLEG	-	404321.57N 0082552.21W	-	-	-	+FL110	-	RNAV 1	Clearance limit: ADNOV 4000ft
TF	PR635	-	405752.51N 0084428.75W	318 (315.9)	20.25	Left	+FL110	-	RNAV 1	
TF	PR615	-	411724.96N 0084939.25W	351 (348.7)	19.92	Right	+FL070	-	RNAV 1	
TF	PR613	-	412417.18N 0085128.48W	351 (348.7)	7.00	-	+4000ft	-	RNAV 1	
TF	PR611	-	412955.61N 0085301.40W	350 (348.3)	5.76	-	+4000ft	-	RNAV 1	
TF	ADNOV	-	413105.68N 0084511.39W	081 (078.7)	6.00	Right	+4000ft	-	RNAV 1	
Porto STAR RNAV 1 RWY 17 – ABLEG 3T										
IF	ABLEG	-	404321.57N 0082552.21W	-	-	-	+FL110	-	RNAV 1	Clearance limit: ADNOV 4000ft
TF	PR636	-	410012.08N 0082856.07W	354 (352.2)	16.99	-	+FL110	-	RNAV 1	
TF	PR616	-	411944.73N 0083401.99W	351 (348.9)	19.91	-	+4000ft	-	RNAV 1	
TF	PR614	-	412636.94N 0083549.57W	351 (348.9)	7.00	-	+4000ft	-	RNAV 1	
TF	PR612	-	413215.21N 0083721.09W	350 (348.5)	5.75	-	+4000ft	-	RNAV 1	
TF	ADNOV	-	413105.68N 0084511.39W	261 (258.9)	6.00	Left	+4000ft	-	RNAV 1	
Porto STAR RNAV 1 RWY 17 – ASPOR 3T										
IF	ASPOR	-	414854.49N 0080452.32W	-	-	-	+FL110	-	RNAV 1	Clearance limit: ADNOV 4000ft
TF	PR643	-	414450.88N 0081408.49W	241 (239.7)	8.04	-	+FL090	-	RNAV 1	
TF	PR640	-	413553.07N 0083519.79W	242 (240.7)	18.23	-	+FL070	-	RNAV 1	
TF	ADNOV	-	413105.68N 0084511.39W	239 (237.2)	8.82	-	+4000ft	-	RNAV 1	
Porto STAR RNAV 1 RWY 17 – ELGIX 3T										
IF	ELGIX	-	413116.35N 0074022.55W	-	-	-	+FL110	-	RNAV 1	Clearance limit: ADNOV 4000ft
TF	VASIP	-	413317.92N 0082234.08W	276 (273.9)	31.75	-	+FL080	-	RNAV 1	
TF	PR650	-	413301.38N 0082630.74W	267 (264.7)	2.97	Left	+FL070	-	RNAV 1	
TF	PR612	-	413215.21N 0083721.09W	266 (264.7)	8.18	-	+4000ft	-	RNAV 1	
TF	ADNOV	-	413105.68N 0084511.39W	261 (258.9)	6.00	Left	+4000ft	-	RNAV 1	
Porto STAR RNAV 1 RWY 17 – ASMOV 3M										
IF	ASMOV	-	405809.81N 0092049.33W	-	-	-	+FL110	-	RNAV 1	Clearance limit: ADNOV 4000ft
TF	RETMO	-	411340.07N 0090049.71W	046 (044.2)	21.65	-	+FL070	-	RNAV 1	
TF	PR611	-	412955.61N 0085301.40W	022 (019.8)	17.28	Left	+4000ft	-	RNAV 1	
TF	ADNOV	-	413105.68N 0084511.39W	081 (078.7)	6.00	Right	+4000ft	-	RNAV 1	
Porto STAR RNAV 1 RWY 17 – MALIS 5T										
IF	MALIS	-	415120.05N 0073617.21W	-	-	-	+FL110	-	RNAV 1	Clearance limit: ADNOV 4000ft
TF	VASIP	-	413317.92N 0082234.08W	245 (242.8)	39.07	-	+FL080	-	RNAV 1	
TF	PR650	-	413301.38N 0082630.74W	267 (264.7)	2.97	Right	+FL070	-	RNAV 1	
TF	PR612	-	413215.21N 0083721.09W	266 (264.7)	8.18	-	+4000ft	-	RNAV 1	
TF	ADNOV	-	413105.68N 0084511.39W	261 (258.9)	6.00	Left	+4000ft	-	RNAV 1	
Porto STAR RNAV 1 RWY 17 – PESUL 4T										
IF	PESUL	-	405255.32N 0080654.37W	-	-	-	+FL110	-	RNAV 1	Clearance limit: ADNOV 4000ft
TF	PR618	-	410705.95N 0081747.88W	332 (329.9)	16.39	-	+FL070	-	RNAV 1	
TF	PR612	-	413215.21N 0083721.09W	332 (329.7)	29.14	-	+4000ft	-	RNAV 1	
TF	ADNOV	-	413105.68N 0084511.39W	261 (258.9)	6.00	Left	+4000ft	-	RNAV 1	
Porto STAR RNAV 1 RWY 17 – UBANI 3M										
IF	UBANI	-	413328.27N 0091422.27W	-	-	-	+FL110	-	RNAV 1	Clearance limit: ADNOV 4000ft
TF	ADNOV	-	413105.68N 0084511.39W	098 (096.0)	22.04	-	+4000ft	-	RNAV 1	