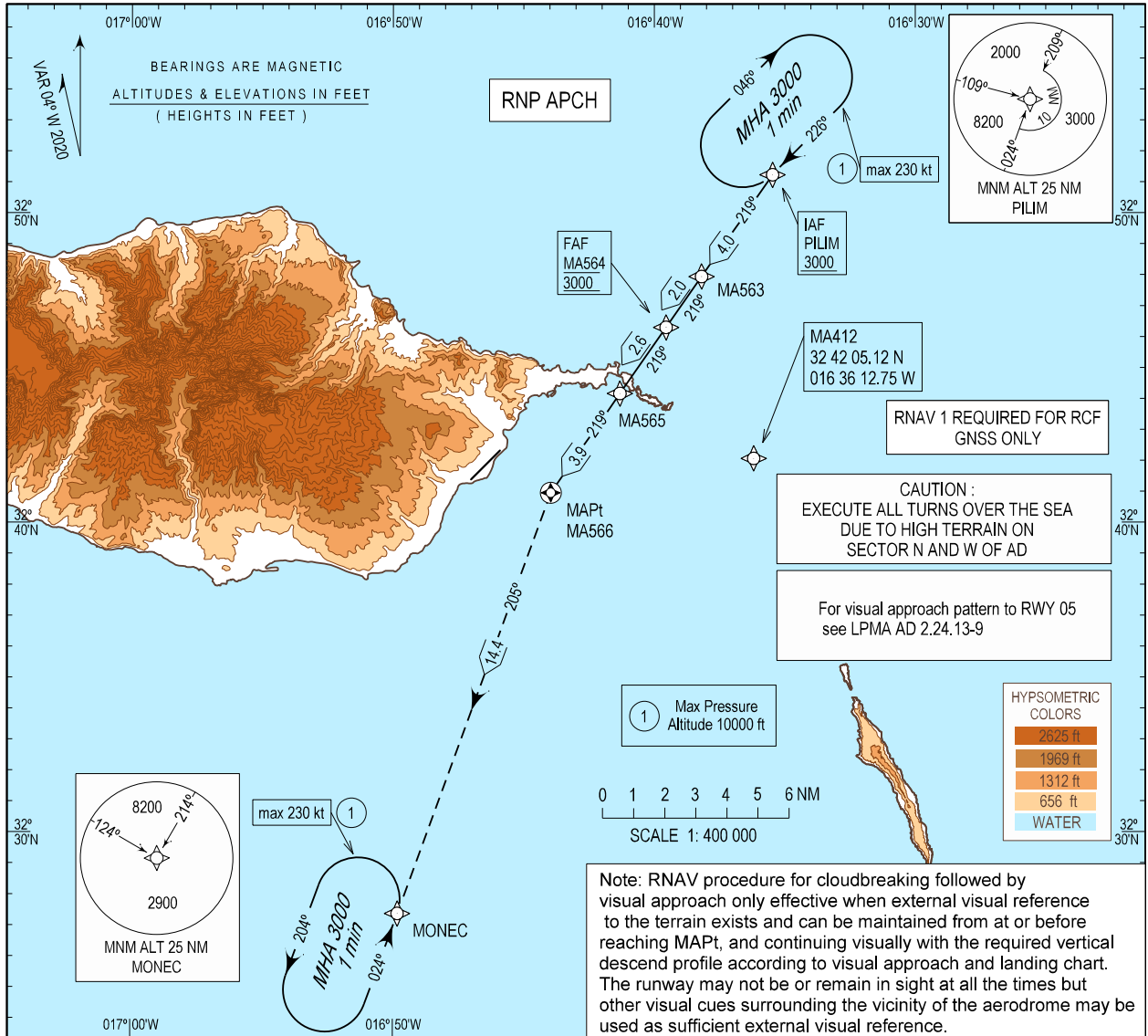


INSTRUMENT APPROACH CHART - ICAO
AD ELEV 191 ft
HEIGHTS RELATED THR RWY 05 - ELEV 146 ft

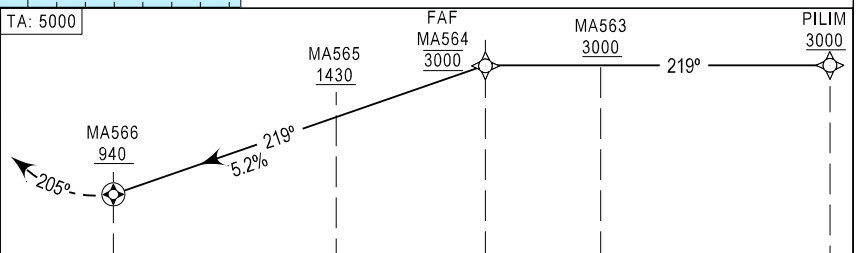
MADEIRA ARR INFORMATION 130.355
MADEIRA APPROACH 119.605
MADEIRA TOWER 124.660

MADEIRA (LPMA)
RNP RWY 05 - a



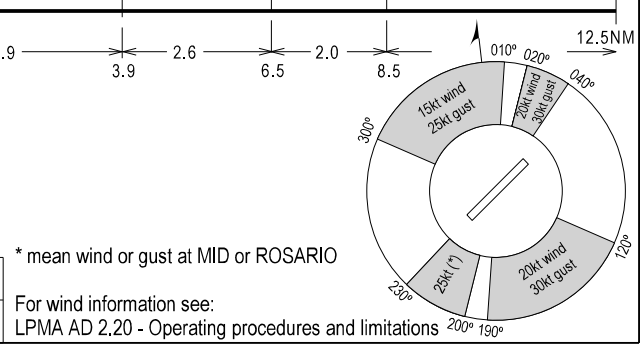
MISSED APPROACH
Turn left to MONEC climbing to 3000 ft.
At MONEC hold or follow ATC instructions.

RCF: Squawk 7600. Proceed as above.
On MONEC holding proceed to MA412 then to PILIM holding, make one complete holding pattern at 3000 ft to perform another RNP RWY 05 approach.



CATEGORY	MINIMA		
	A	B	C - D
MDA (H)	940 (794)	5000 m	800 / 245 m
CIRCLING	940 (794)	5000 m	800 / 245 m

MA564 - MA566 (NM)	A - B - C - D							
	6.5	5	4	3	2	1		
ALTITUDE (HEIGHT)	3000 (2854)	2525 (2379)	2210 (2064)	1895 (1749)	1580 (1434)	1260 (1114)		
Speed	kt	80	100	120	140	160	180	200
Rate of descent (5.2%)	ft / min	420	525	630	730	835	940	1045



TWR FREQ changed.

LPMA RNP RWY05 - a

Path Terminator	Waypoint				Course/Track MAG (True)	Dist NM	Turn Direction	Altitude	Speed	RNP Value NM	Navigation Specification	Remarks
	Identifier	Type	Flyover	Coordinates								
IF	PILIM	IAF	-	325114.86N 0163528.64W	-	-	-	+3000FT	230KT	1.0	RNP APCH	-
TF	MA563	IF	-	324757.77N 0163811.88W	219 (215.0)	4.00	-	+3000FT	-	1.0	RNP APCH	-
TF	MA564	FAF	-	324619.20N 0163933.43W	219 (215.0)	2.00	-	@3000FT	-	0.3	RNP APCH	-
TF	MA565	-	-	324411.05N 0164119.36W	219 (214.9)	2.60	-	+1430FT	-	0.3	RNP APCH	-
TF	MA566	MAPT	Y	324058.77N 0164358.11W	219 (214.9)	3.90	-	-	-	1.0	RNP APCH	-
TF	MONEC	-	-	322722.93N 0164949.39W	205 (200.1)	14.44	L	+3000FT	230KT	1.0	RNP APCH	-
HM	MONEC	-	-	322722.93N 0164949.39W	-	-	L	+3000FT	230KT	1.0	RNP APCH	-

RNAV HOLDING

HLDG ID	Inbound Track MAG (true)	Turn Direction	MAX IAS (KT)	MAX/MNM HLDG ALT FL/FT (MSL)	TIME (MIN) or DIST Outbound	Controlling Unit
PILIM	226(222.0)	R	230	FL100 / 3000FT	1 MIN	Madeira TWR
MONEC	024(020.0)	L	230	FL100 / 3000FT	1 MIN	Madeira TWR