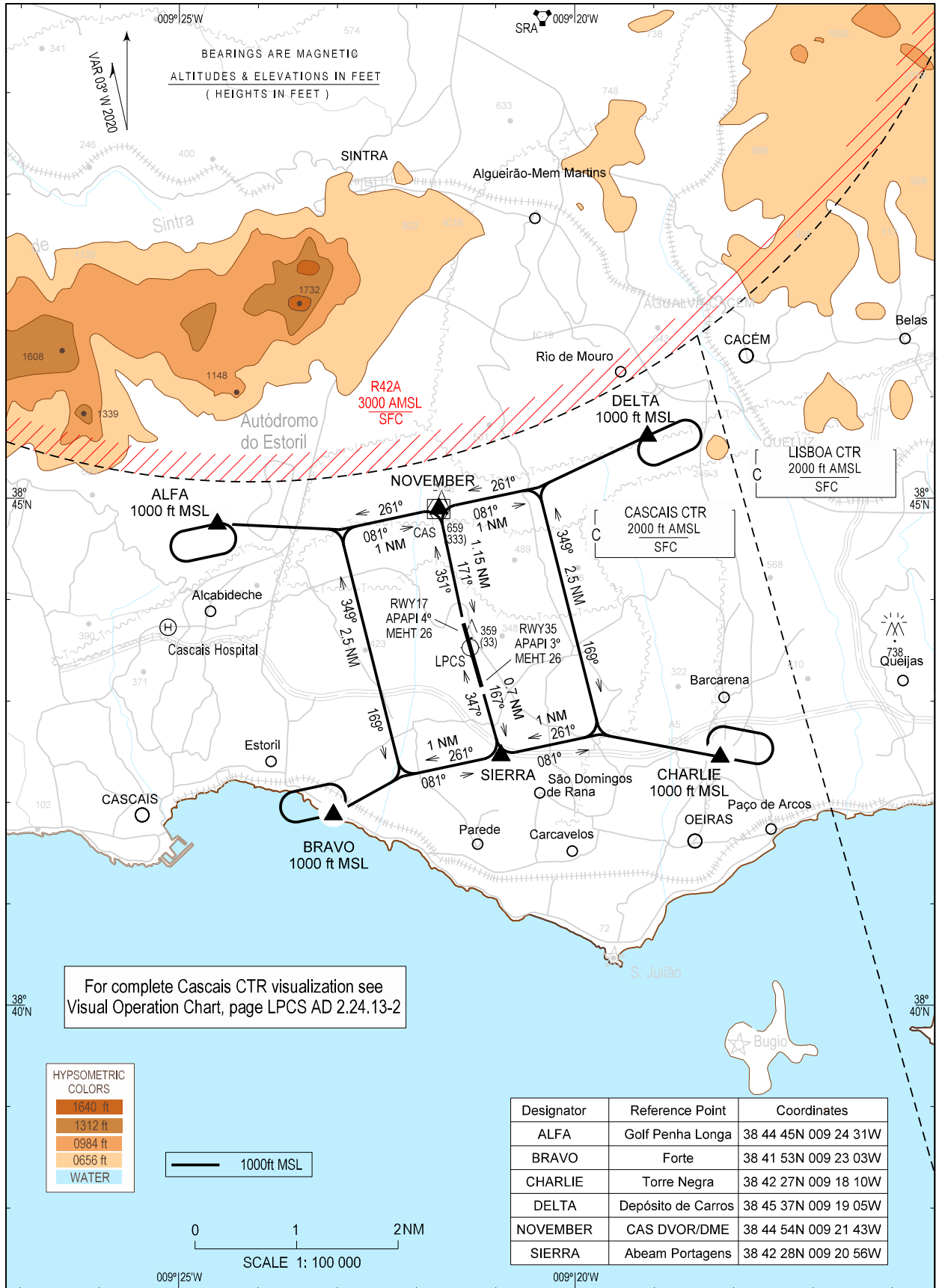


VISUAL
APPROACH
CHART - ICAO

AD ELEV 326 ft
HEIGHTS RELATED
TO AD ELEV

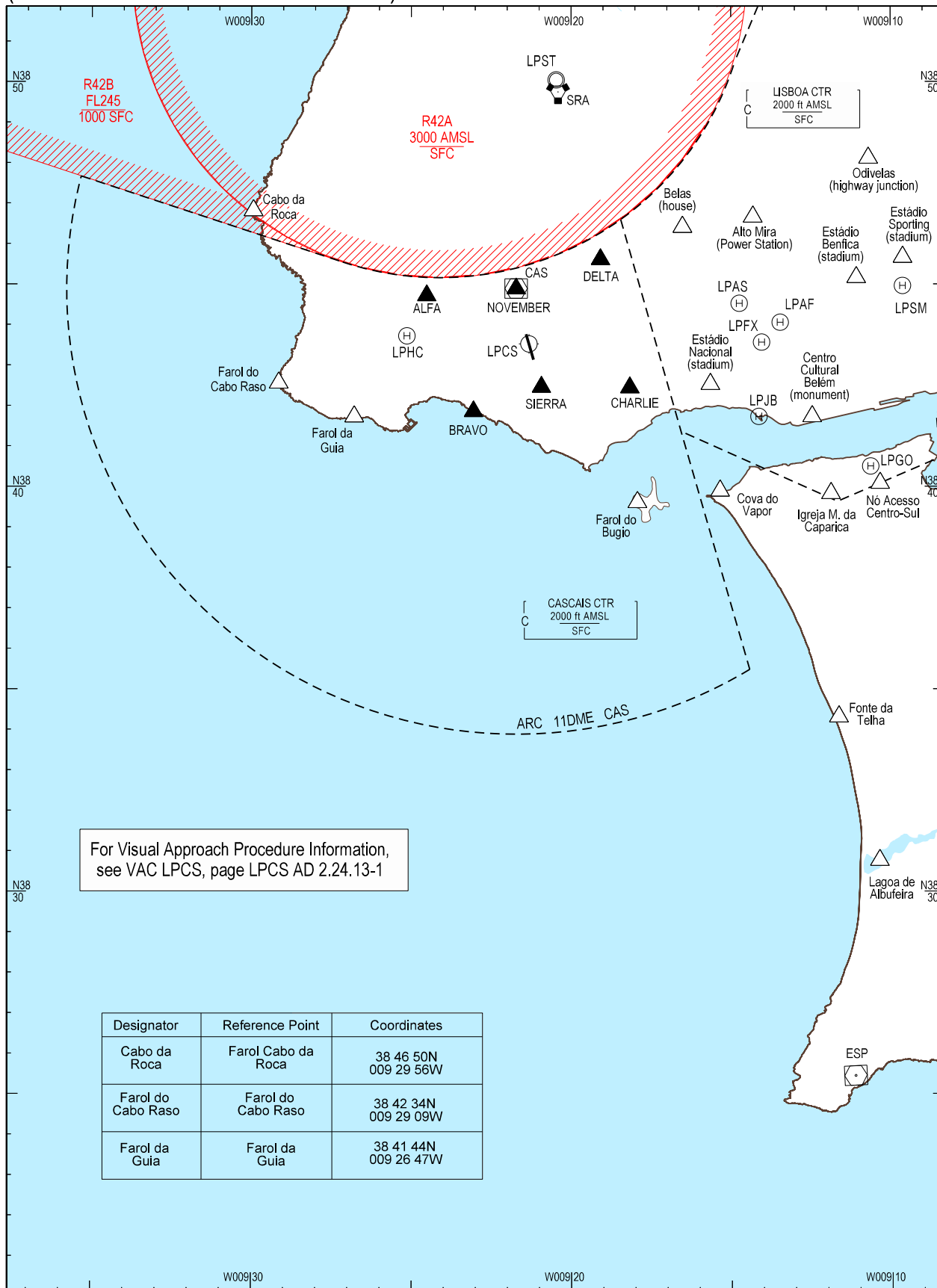
CASCAIS TOWER 120.305
CASCAIS GROUND 121.830

CASCAIS
LPCS



SUPPLEMENTARY
VISUAL APPROACH CHART
(Detailed information of Cascais CTR)

CASCAIS
LPCS



For Visual Approach Procedure Information, see VAC LPCS, page LPCS AD 2.24.13-1

Designator	Reference Point	Coordinates
Cabo da Roca	Farol Cabo da Roca	38 46 50N 009 29 56W
Farol do Cabo Raso	Farol do Cabo Raso	38 42 34N 009 29 09W
Farol da Guia	Farol da Guia	38 41 44N 009 26 47W

New visual references.