

INSTRUMENT
APPROACH
CHART - ICAO

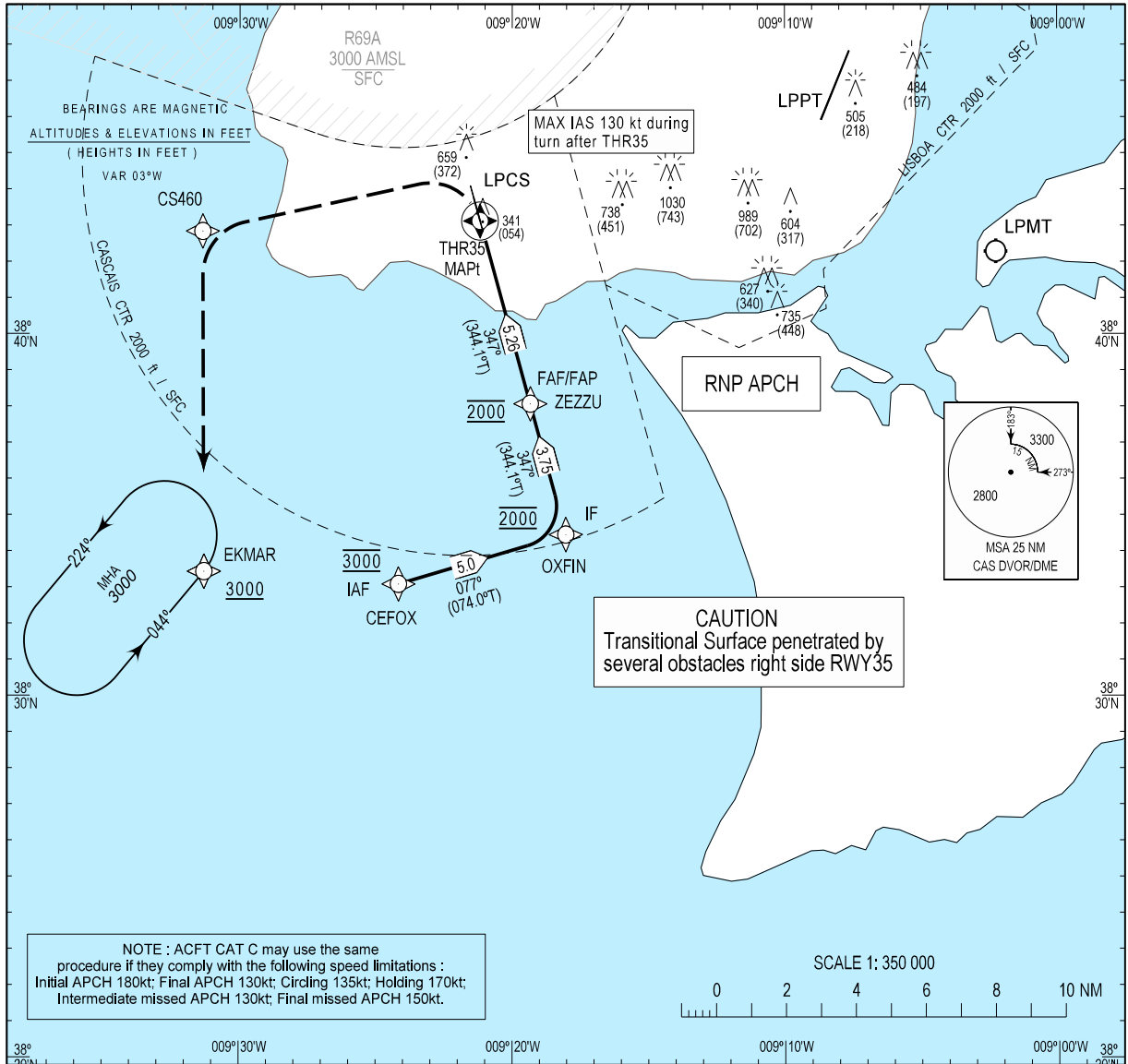
AD ELEV 326 ft
HEIGHTS RELATED
THR RWY 35 - ELEV 287 ft

LISBOA APPROACH 119.105
CASCAIS TOWER 120.305
CASCAIS GROUND 121.830

EGNOS
CH 72329
E35A
RDH: 40

CASCAIS (LPCS)

RNP RWY35
CAT A-B



NOTE : ACFT CAT C may use the same procedure if they comply with the following speed limitations :
Initial APCH 180kt; Final APCH 130kt; Circling 135kt; Holding 170kt;
Intermediate missed APCH 130kt; Final missed APCH 150kt.

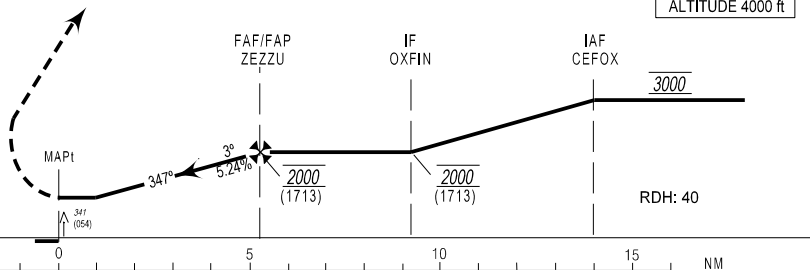
BARO-VNAV
minimum temperature: 0°C

TRANSITION
ALTITUDE 4000 ft

MISSED APPROACH
Climb gradient 5%". If unable, advise ATC.
At MAPt RWY35 turn left to CS460, climbing to 3000 ft. After CS460 proceed to EKMAR.
At EKMAR, hold or follow ATC instructions.

⁽¹⁾ Due to operational altitude constraint at CS460.

ELEV 287 ft
(THR RWY 35)



RCF: Proceed as above, Squawk 7600.
On EKMAR make one complete holding pattern at 3000 ft, and then proceed to CEFOX to perform another RNP approach

CAT	LPV		LNAV / VNAV		LNAV		CIRCLING (RWY35)
	DA(H)	OCH	DA(H)	OCH	MDA(H)	OCH	
A							990 (664)
B	820 (533)	533	820 (533)	533	820 (533)	533	1060 (734)

DIST THR NM	6	5	4	3	2	1
Altitude (height)	2238 (1951)	1919 (1632)	1601 (1314)	1282 (995)	964 (677)	645 (358)

Speed	kt	80	100	120	140	160	180	200
Rate of descent (5.2%)	ft / min	420	525	630	735	840	945	1050

IAP updated.

Instrument Approach Procedure Coding Table

LPCS RNP RWY35 A/B											
Path Terminator	Waypoint				Course/Track MAG (True)	Dist NM	Turn Direction	Constraints		Navigation Specification	Remarks
	Identifier	Type	Flyover	Coordinates				Level	Speed		
IF	CEFOX	IAF	N	383305.95N 0092409.73W	-	-	-	@3000FT	-	RNP APCH	-
TF	OXFIN	IF	N	383428.36N 0091801.77W	077 (074.0)	5.00	Left	@2000FT	-	RNP APCH	
TF	ZEZU	FAF/FAP	N	383804.84N 0091920.33W	347 (344.1)	3.75	-	@2000FT	-	RNP APCH	
TF	RW35	MAPT	Y	384308.41N 0092110.74W	347 (344.1)	5.26	-	.	-	RNP APCH	
DF	CS460	-	N	384250.96N 0093121.09W	-	-	Left	-	130KT	RNP APCH	
TF	EKMAR	-	N	383326.56N 0093117.20W	183 (179.7)	9.40	-	+3000FT	-	RNP APCH	

Input data

Operation Type	0
SBAS Provider	1 (EGNOS)
Airport Identifier	LPCS
Runway	35
Runway Letter	0 (None)
Approach Performance Designator	0
Route Indicator	
Reference Path Data Selector	0
Reference Path Identifier	E35A
LTP/FTP Latitude	384308.4100N
LTP/FTP Longitude	0092110.7400W
LTP/FTP Ellipsoidal Height (metres)	141.8
FPAP Latitude	384352.0590N
Delta FPAP Latitude (seconds)	43.6490
FPAP Longitude	0092126.6390W
Delta FPAP Longitude (seconds)	-15.8990
Threshold Crossing Height	40.0
TCH Units Selector	0 (feet)
Glidepath Angle (degrees)	3.00
Course Width (metres)	105.00
Length Offset (metres)	0
HAL (metres)	40.0
VAL (metres)	50.0

Output data

Data Block	10 13 03 10 0C 23 00 00 01 35 33 05 F4 CB 9D 10 58 73 FC FB 8A 19 02 55 01 CA 83 FF 90 01 2C 01 64 00 C8 FA 17 CE F6 2A
Calculated CRC Value	17CEF62A

Required Additional Data

ICAO Code	LP
LTP/FTP Orthometric Height (metres)	87.4