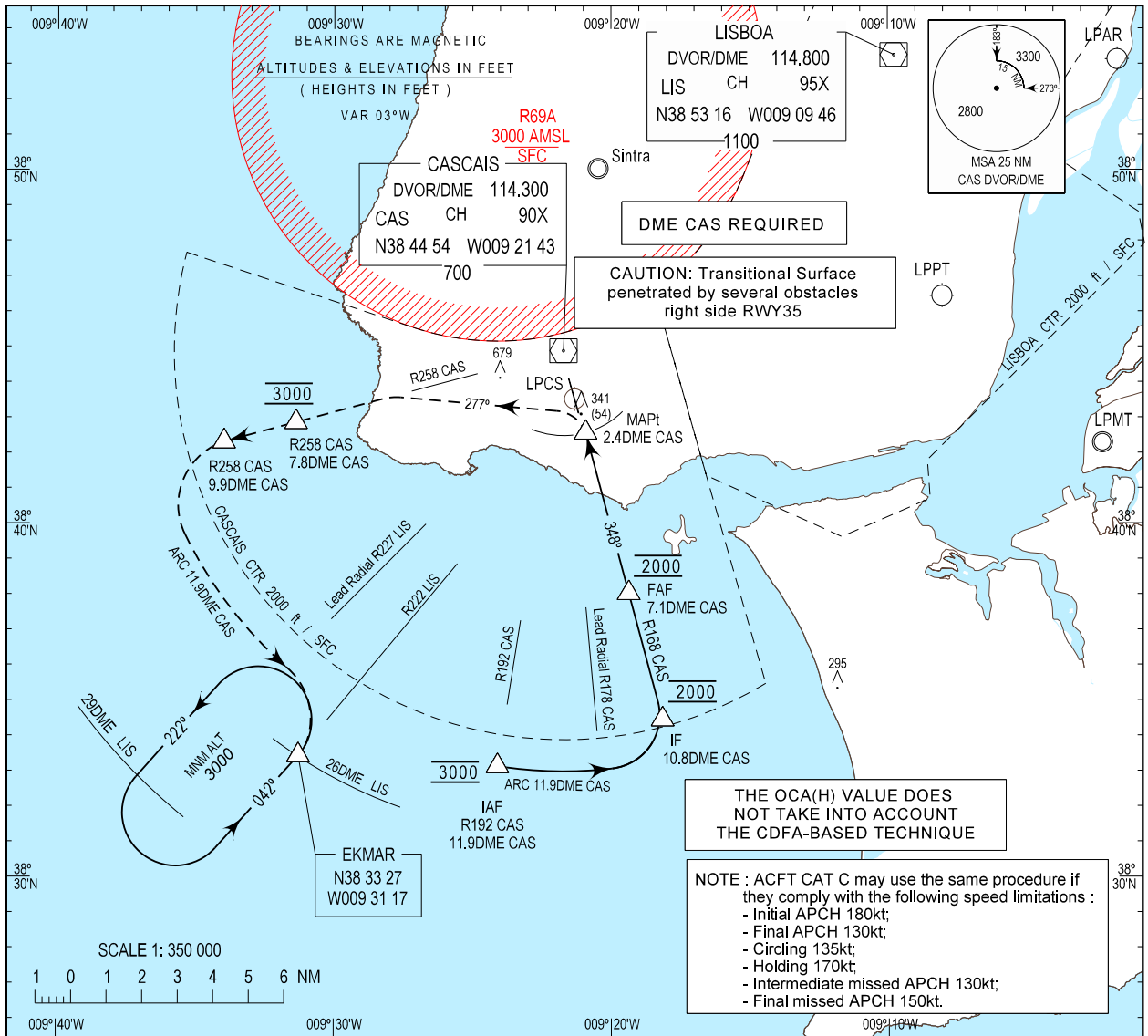


INSTRUMENT
APPROACH
CHART - ICAO

AD ELEV 326 ft
HEIGHTS RELATED
THR RWY 35 - ELEV 287 ft

LISBOA APPROACH 119.105
CASCAIS TOWER 120.305
CASCAIS GROUND 121.830

CASCAIS (LPCS)
DVOR
RWY35
CAT A-B



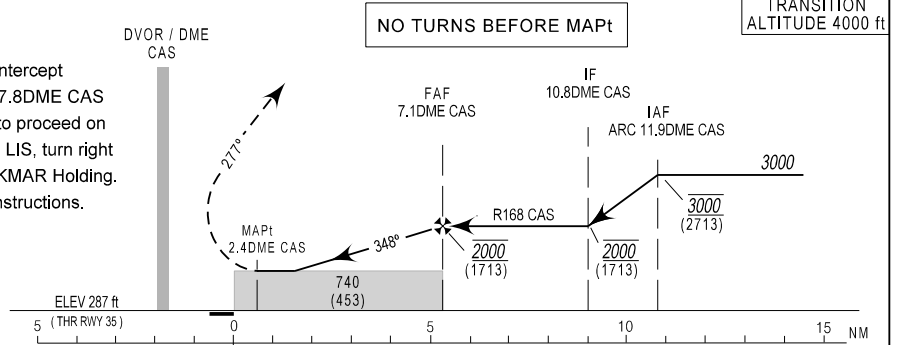
MISSED APPROACH:

Climb gradient 5%*. If unable, advise ATC.
At 2.4DME CAS, turn left on track 277° to intercept and proceed on R258 CAS to reach R258/7.8DME CAS at 3000 ft. At R258/9.9 DME CAS turn left to proceed on ARC 11.9 DME CAS. At Lead Radial R227 LIS, turn right to intercept and proceed on R222 LIS to EKMAR Holding. On EKMAR hold at 3000 ft or follow ATC instructions.

*Due to operational altitude constraint at R258/7.8DME CAS

RCF:

Proceed as above, Squawk 7600. On EKMAR Holding, make one complete holding pattern at 3000 ft. Then at R217/13.9DME CAS turn right to proceed on ARC 11.9 DME CAS. at Lead Radial R178 CAS, turn left to intercept R168 CAS to perform another approach.



CAT	MDA/H	OCH	CIRCLING RWY35	
			MDA/H	
A	820 (533)	453	990 (664)	
B			1060 (734)	

DME-CAS	6	5	4	3
ALTITUDE	1680	1360	1040	720
HEIGHT	(1393)	(1073)	(753)	(433)
DIST THR(NM)	4.2	3.2	2.2	1.2

SPEED	kt	80	100	120	130
Rate of descent (5.2%)	ft/min	420	525	630	685

IAP updated.

THIS PAGE INTENTIONALLY LEFT BLANK