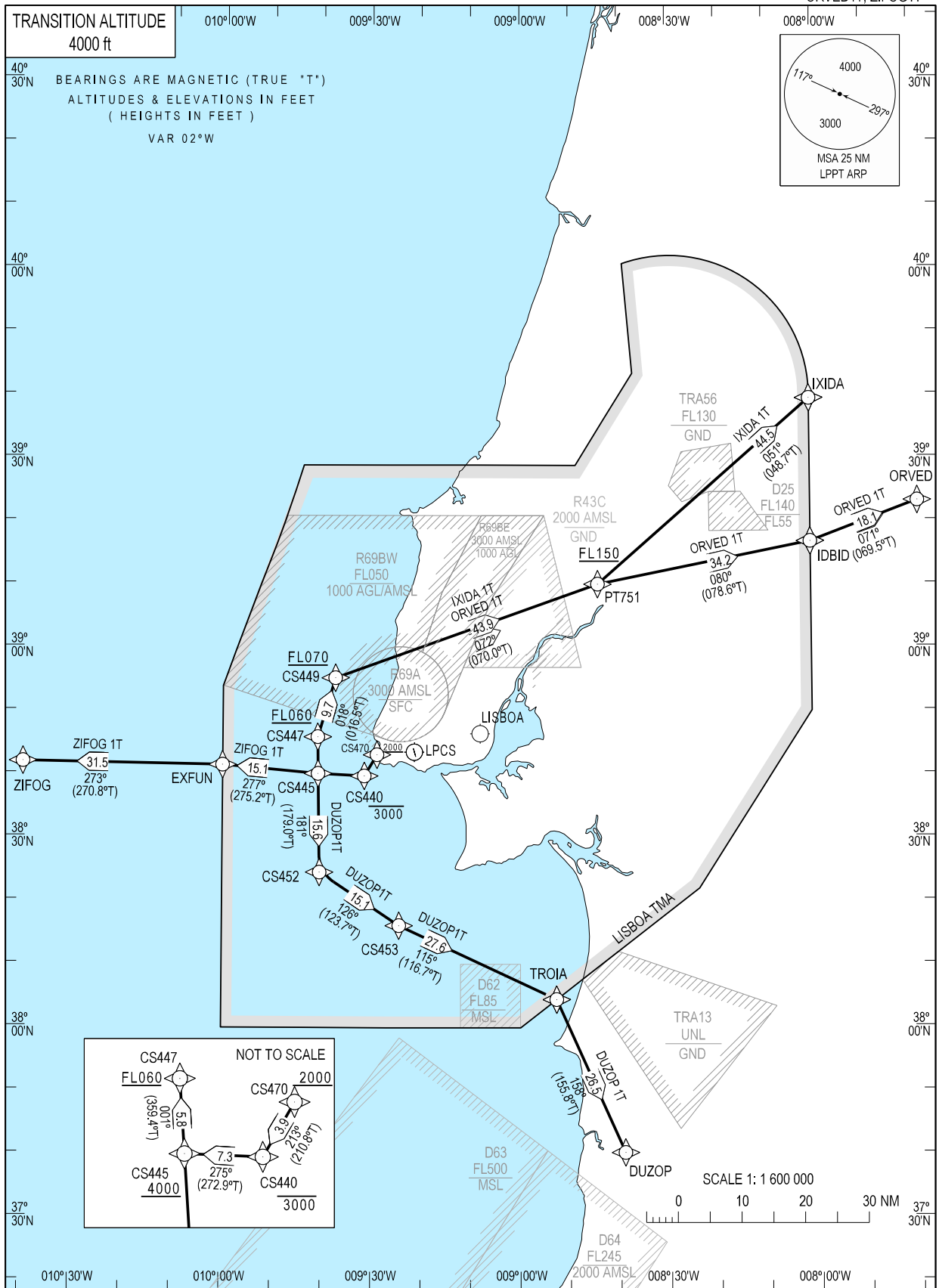


STANDARD DEPARTURE CHART - INSTRUMENT (SID) - ICAO

CASCAIS TOWER 120.305
LISBOA APPROACH 119.105

CASCAIS (LPCS)
RNAV Rwy 35
DUZOP1T, IXIDA1T
ORVED1T, ZIFOG1T



CASCAIS SID RNAV1 DUZOP1T (RWY 35)										
Path Terminator	Waypoint			Course/Track MAG (True)	Dist NM	Turn Direction	Constraints		Navigation Specification	Remarks
	Identifier	Flyover	Coordinates				Level	Speed		
IF	CS470 (IDF)	N	384306.36N 0092852.04W	-	-	Left	+2000 ft	-	RNAV 1	Immediate left turn after departure to avoid military area LPR69A. Visual departure RWY 35. Maintain own terrain clearance until CS470 (IDF). If unable to comply with Level Constraints advise ATC.
TF	CS440	N	383945.06N 0093125.08W	213 (210.8)	3.9016	-	-3000 ft	-	RNAV 1	
TF	CS445	N	384007.17N 0094044.45W	275 (272.9)	7.3112	-	+4000 ft	-	RNAV 1	
TF	CS452	N	382430.91N 0094024.29W	001 (359.4)	15.5905	-	-	-	RNAV 1	
TF	CS453	N	381605.56N 0092423.62W	018 (016.5)	15.1487	-	-	-	RNAV 1	
TF	TROIA	N	380423.71N 0085244.95W	072 (070.0)	27.5548	-	-	-	RNAV 1	
TF	DUZOP	N	374011.24N 0083905.64W	051 (048.7)	26.4876	-	-	-	RNAV 1	

Designator	Route	After Take-off		Remarks
		Climb to ALT/FL	Contact	
DUZOP1T	After departure turn left as soon as possible to CS470 (IDF), then proceed to CS440 - CS445 - CS452 - CS453 - TROIA - DUZOP	FL60	-	Immediate left turn after departure to avoid military area LPR69A. Visual departure RWY 35. Maintain own terrain clearance until CS470 (IDF) After departure climb FL060. If unable to comply with Level Constraints advise ATC.

CASCAIS SID RNAV1 IXIDA1T (RWY 35)										
Path Terminator	Waypoint			Course/Track MAG (True)	Dist NM	Turn Direction	Constraints		Navigation Specification	Remarks
	Identifier	Flyover	Coordinates				Level	Speed		
IF	CS470 (IDF)	N	384306.36N 0092852.04W	-	-	Left	+2000 ft	-	RNAV 1	Immediate left turn after departure to avoid military area LPR69A. Visual departure RWY 35. Maintain own terrain clearance until CS470 (IDF) After departure climb FL060. If unable to comply with Level Constraints advise ATC.
TF	CS440	N	383945.06N 0093125.08W	213 (210.8)	3.9016	-	-3000 ft	-	RNAV 1	
TF	CS445	N	384007.17N 0094044.45W	275 (272.9)	7.3112	-	+4000 ft	-	RNAV 1	
TF	CS447	N	384555.57N 0094049.14W	001 (359.4)	5.8012	-	+FL060	-	RNAV 1	
TF	CS449	N	385515.62N 0093716.71W	018 (016.5)	9.7268	-	+FL070	-	RNAV 1	
TF	PT751	N	391003.24N 0084414.26W	072 (070.0)	43.8868	-	+FL150	-	RNAV 1	
TF	IXIDA	N	393918.46N 0080100.00W	051 (048.7)	44.4663	-	-	-	RNAV 1	

Designator	Route	After Take-off		Remarks
		Climb to ALT/FL	Contact	
IXIDA1T	After departure turn left as soon as possible to CS470 (IDF), then proceed to CS440 - CS445 - CS447 - CS449 - PT751 - IXIDA	FL060	-	Immediate left turn after departure to avoid military area LPR69A. Visual departure RWY 35. Maintain own terrain clearance until CS470 (IDF). If unable to comply with Level Constraints advise ATC.

CASCAIS SID RNAV1 ORVED1T (RWY 35)										
Path Terminator	Waypoint			Course/Track MAG (True)	Dist NM	Turn Direction	Constraints		Navigation Specification	Remarks
	Identifier	Flyover	Coordinates				Level	Speed		
IF	CS470 (IDF)	N	384306.36N 0092852.04W	-	-	Left	+2000 ft	-	RNAV 1	Immediate left turn after departure to avoid military area LPR69A. Visual departure RWY 35. Maintain own terrain clearance until CS470 (IDF). After departure climb FL060. If unable to comply with Level Constraints advise ATC.
TF	CS440	N	383945.06N 0093125.08W	213 (210.8)	3.9016	-	-3000 ft	-	RNAV 1	
TF	CS445	N	384007.17N 0094044.45W	275 (272.9)	7.3112	-	+4000 ft	-	RNAV 1	
TF	CS447	N	384555.57N 0094049.14W	001 (359.4)	5.8012	-	+FL060	-	RNAV 1	
TF	CS449	N	385515.62N 0093716.71W	018 (016.5)	9.7268	-	+FL070	-	RNAV 1	
TF	PT751	N	391003.24N 0084414.26W	072 (070.0)	43.8868	-	+FL150	-	RNAV 1	
TF	IDBID	N	391641.60N 0080100.00W	051 (048.7)	34.2495	-	-	-	RNAV 1	
TF	ORVED	N	392300.00N 0073907.00W	071 (069.5)	18.1114	-	-	-	RNAV 1	

Designator	Route	After Take-off		Remarks
		Climb to ALT/FL	Contact	
ORVED1T	After departure turn left as soon as possible to CS470 (IDF), then proceed to CS440 - CS445 - CS447 - CS449 - PT751 - IDBID - ORVED	FL060	-	Immediate left turn after departure to avoid military area LPR69A. Visual departure RWY 35. Maintain own terrain clearance until CS470 (IDF). If unable to comply with Level Constraints advise ATC.

CASCAIS SID RNAV1 ZIFOG1T (RWY 35)										
Path Terminator	Waypoint			Course/Track MAG (True)	Dist NM	Turn Direction	Constraints		Navigation Specification	Remarks
	Identifier	Flyover	Coordinates				Level	Speed		
IF	CS470 (IDF)	N	384306.36N 0092852.04W	-	-	Left	+2000 ft	-	RNAV 1	Immediate left turn after departure to avoid military area LPR69A. Visual departure RWY 35. Maintain own terrain clearance until CS470 (IDF). After departure climb FL060. If unable to comply with Level Constraints advise ATC.
TF	CS440	N	383945.06N 0093125.08W	213 (210.8)	3.9016	-	-3000 ft	-	RNAV 1	
TF	CS445	N	384007.17N 0094044.45W	275 (272.9)	7.3112	-	+4000 ft	-	RNAV 1	
TF	EXFUN	N	384128.05N 0095959.96W	001 (359.4)	15.1409	-	-	-	RNAV 1	
TF	ZIFOG	N	384147.25N 0104015.58W	018 (016.5)	31.5223	-	-	-	RNAV 1	

Designator	Route	After Take-off		Remarks
		Climb to ALT/FL	Contact	
ZIFOG1T	After departure turn left as soon as possible to CS470 (IDF), then proceed to CS440 - CS445 - EXFUN - ZIFOG	FL060	-	Immediate left turn after departure to avoid military area LPR69A. Visual departure RWY 35. Maintain own terrain clearance until CS470 (IDF). If unable to comply with Level Constraints advise ATC.