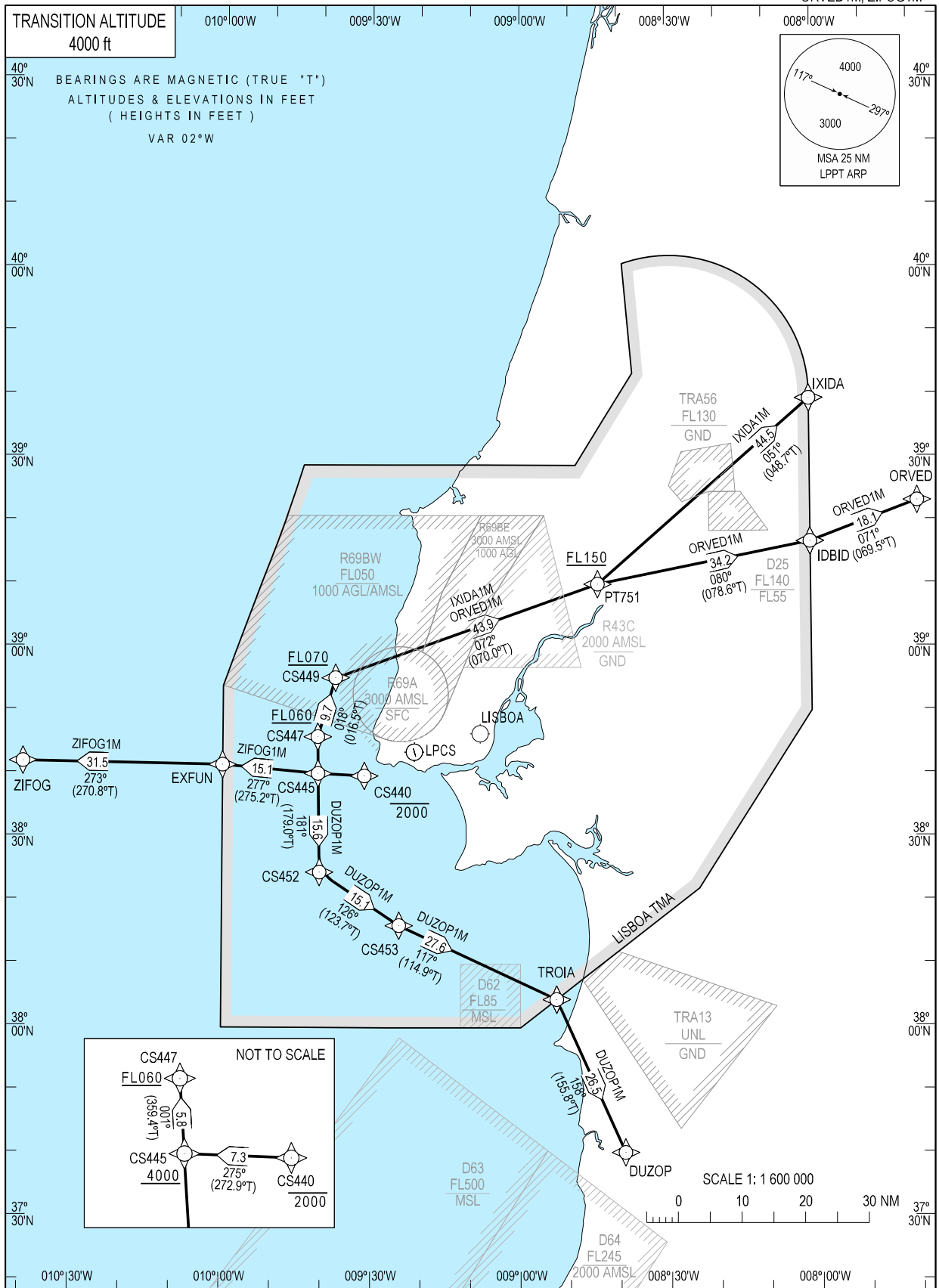


STANDARD DEPARTURE CHART -  
INSTRUMENT (SID) - ICAO

CASCAIS TOWER 120.305  
LISBOA APPROACH 119.105

CASCAIS (LPCS)  
RNAV Rwy 17  
DUZOP1M, IXIDA1M  
ORVED1M, ZIFOG1M



CASCAIS SID RNAV1 DUZOP1M (RWY 17)										
Path Terminator	Waypoint			Course/Track MAG (True)	Dist NM	Turn Direction	Constraints		Navigation Specification	Remarks
	Identifier	Flyover	Coordinates				Level	Speed		
CA	-	-	-	166 (164.1)	-	-	@800 ft	-	RNAV 1	After departure climb FL060.
DF	CS440	N	383945.06N 0093125.08W	-	-	Right	-2000 ft	-	RNAV 1	
TF	CS445	N	384007.17N 0094044.45W	275 (273.0)	7.3112	-	+4000 ft	-	RNAV 1	
TF	CS452	N	382430.91N 0094024.29W	181 (179.0)	15.5905	-	-	-	RNAV 1	
TF	CS453	N	381605.56N 0092423.62W	126 (123.7)	15.1487	-	-	-	RNAV 1	
TF	TROIA	N	380423.71N 0085244.95W	117 (114.9)	27.5548	-	-	-	RNAV 1	
TF	DUZOP	N	374011.24N 0083905.64W	158 (155.8)	26.4876	-	-	-	RNAV 1	

Designator	Route	After Take-off		Remarks
		Climb to ALT/FL	Contact	
DUZOP1M	After departure climb straight ahead. Crossing 800 ft ALT, turn right to CS440 - CS445 - CS452 - CS453 - TROIA - DUZOP	FL060	-	-

CASCAIS SID RNAV1 IXIDA1M (RWY 17)										
Path Terminator	Waypoint			Course/Track MAG (True)	Dist NM	Turn Direction	Constraints		Navigation Specification	Remarks
	Identifier	Flyover	Coordinates				Level	Speed		
CA	-	-	-	166 (164.1)	-	-	@800 ft	-	RNAV 1	After departure climb FL060. If unable to comply with Level Constraints advise ATC.
DF	CS440	N	383945.06N 0093125.08W	-	-	Right	-2000 ft	-	RNAV 1	
TF	CS445	N	384007.17N 0094044.45W	275 (272.9)	7.3112	-	+4000 ft	-	RNAV 1	
TF	CS447	N	384555.57N 0094049.14W	001 (359.4)	5.8012	-	+FL060	-	RNAV 1	
TF	CS449	N	385515.62N 0093716.71W	018 (016.5)	9.7268	-	+FL070	-	RNAV 1	
TF	PT751	N	391003.24N 0084414.26W	072 (070.0)	43.8868	-	+FL150	-	RNAV 1	
TF	IXIDA	N	393918.46N 0080100.00W	051 (048.7)	44.4663	-	-	-	RNAV 1	

Designator	Route	After Take-off		Remarks
		Climb to ALT/FL	Contact	
IXIDA1M	After departure climb straight ahead. Crossing 800 ft ALT, turn right to CS440 - CS445 - CS447 - CS449 - PT751 - IXIDA	FL60	-	If unable to comply with Level Constraints advise ATC.

CASCAIS SID RNAV1 ORVED1M (RWY 17)										
Path Terminator	Waypoint			Course/Track MAG (True)	Dist NM	Turn Direction	Constraints		Navigation Specification	Remarks
	Identifier	Flyover	Coordinates				Level	Speed		
CA	-	-	-	166 (164.1)	-	-	@800 ft	-	RNAV 1	After departure climb FL060. If unable to comply with Level Constraints advise ATC.
DF	CS440	N	383945.06N 0093125.08W	-	-	Right	-2000 ft	-	RNAV 1	
TF	CS445	N	384007.17N 0094044.45W	275 (272.9)	7.3112	-	+4000 ft	-	RNAV 1	
TF	CS447	N	384555.57N 0094049.14W	001 (359.4)	5.8012	-	+FL060	-	RNAV 1	
TF	CS449	N	385515.62N 0093716.71W	018 (016.5)	9.7268	-	+FL070	-	RNAV 1	
TF	PT751	N	391003.24N 0084414.26W	072 (070.0)	43.8868	-	+FL150	-	RNAV 1	
TF	IDBID	N	391641.60N 0080100.00W	051 (048.7)	34.2495	-	-	-	RNAV 1	
TF	ORVED	N	392300.00N 0073907.00W	071 (069.5)	18.1114	-	-	-	RNAV 1	

Designator	Route	After Take-off		Remarks
		Climb to ALT/FL	Contact	
ORVED1M	After departure climb straight ahead. Crossing 800FT ALT, turn right to CS440 - CS445 - CS447 - CS449 - PT751 - IDBID - ORVED	FL60	-	After departure climb FL060. If unable to comply with Level Constraints advise ATC.

CASCAIS SID RNAV1 ZIFOG1M (RWY 17)										
Path Terminator	Waypoint			Course/Track MAG (True)	Dist NM	Turn Direction	Constraints		Navigation Specification	Remarks
	Identifier	Flyover	Coordinates				Level	Speed		
CA	-	-	-	166 (164.1)	-	-	@800 ft	-	RNAV 1	After departure climb FL060.
DF	CS440	N	383945.06N 0093125.08W	-	-	Right	-2000 ft	-	RNAV 1	
TF	CS445	N	384007.17N 0094044.45W	275 (272.9)	7.3112	-	+4000 ft	-	RNAV 1	
TF	EXFUN	N	384128.05N 0095959.96W	001 (359.4)	15.1409	-	-	-	RNAV 1	
TF	ZIFOG	N	384147.25N 0104015.58W	018 (016.5)	31.5223	-	-	-	RNAV 1	

Designator	Route	After Take-off		Remarks
		Climb to ALT/FL	Contact	
ZIFOG1M	After departure climb straight ahead. Crossing 800FT ALT, turn right to CS440, then CS445 - EXFUN - ZIFOG	FL60	-	After departure climb FL060.

THIS PAGE INTENTIONALLY LEFT BLANK