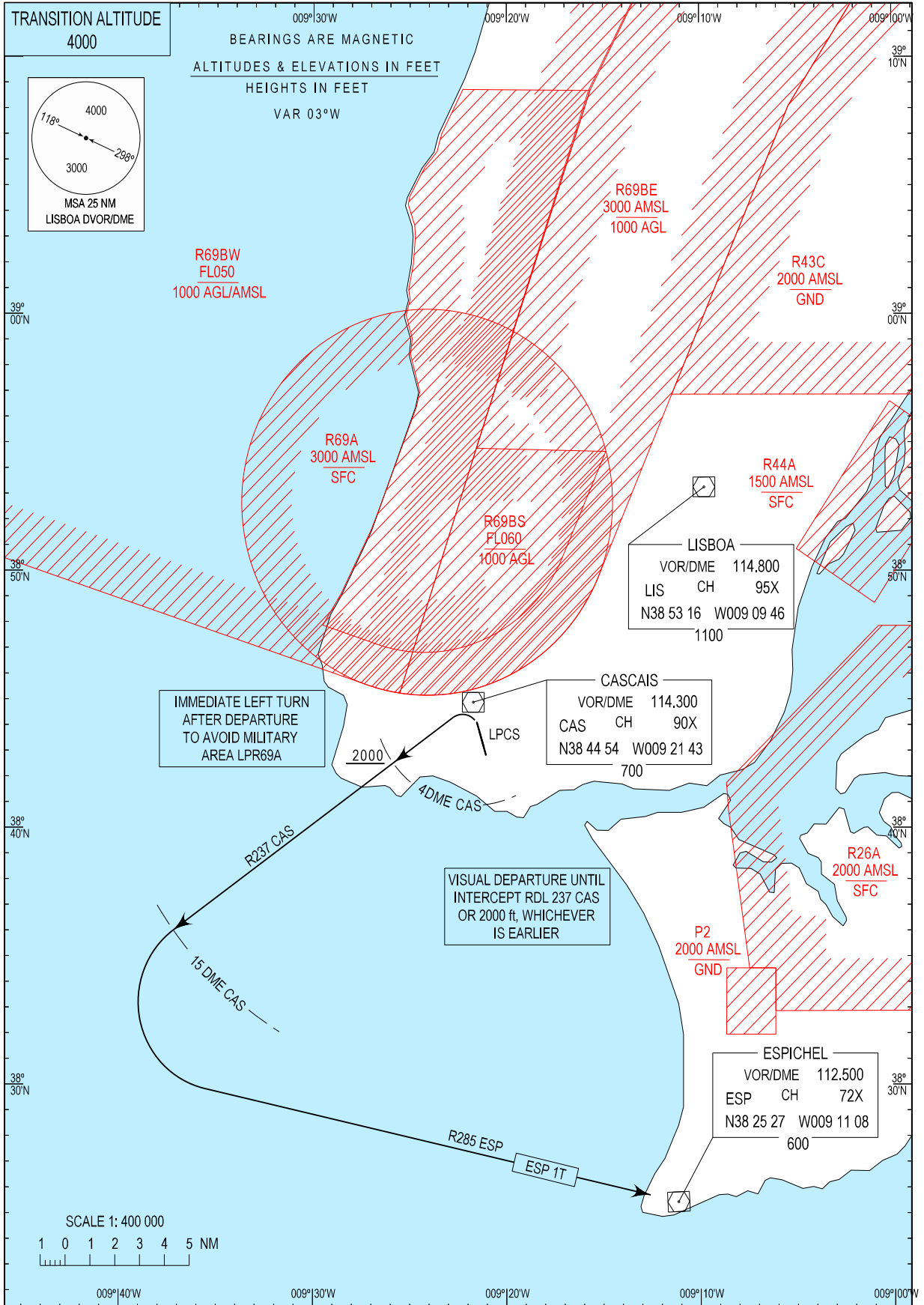


STANDARD DEPARTURE CHART -
INSTRUMENT (SID) - ICAO

CASCAIS TOWER 120.305
LISBOA APPROACH 119.105

CASCAIS (LPCS)
RWY 35
ESP 1T



Airspace updated.

CASCAIS STANDARD INSTRUMENT DEPARTURE (SID) RWY 35

Designator	Route	After Take-off		Remarks
		Climb to ALT/FL	Contact	
ESP1T	Immediate left turn after departure to intercept and proceed on RDL237 CAS DVOR/DME outbound. Cross 4DME CAS DVOR/DME at or above 2000FT. At 15DME CAS DVOR/DME turn left to intercept and proceed on RDL285 ESP DVOR/DME inbound ESP DVOR/DME.	3000 ft	-	Immediate left turn after departure to avoid military area LPR69A. Visual departure until intercept RDL 237 CAS or 2000 ft, whichever is earlier. If unable to reach 2000 ft at 4DME CAS advise ATC.