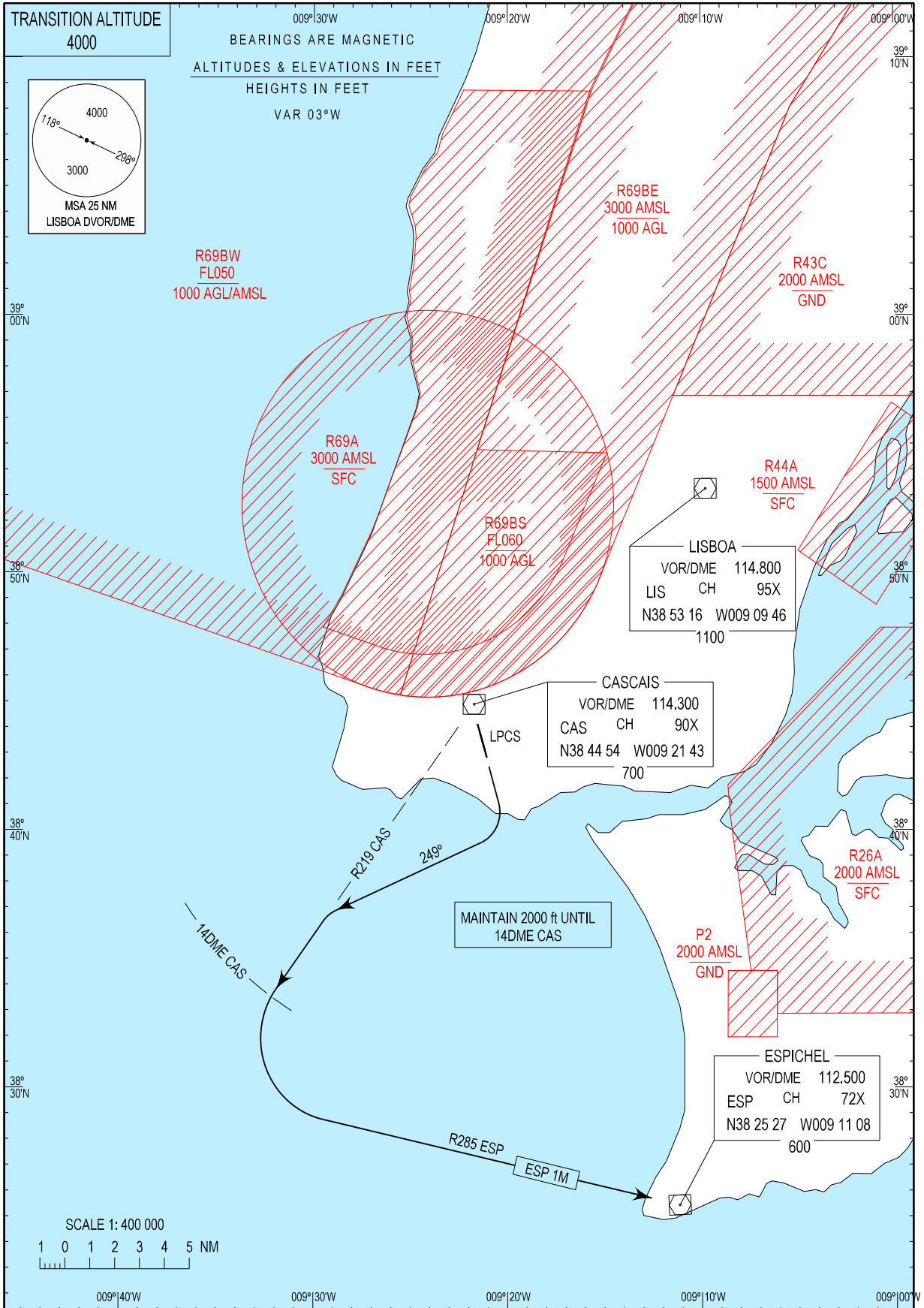


STANDARD DEPARTURE CHART -
INSTRUMENT (SID) - ICAO

CASCAIS TOWER 120.305
LISBOA APPROACH 119.105

CASCAIS (LPCS)
RWY 17
ESP 1M



Airspace updated.

CASCAIS SID ESP 1M (RWY17)				
DESIGNATOR	Route	After Take-off		Remarks
		Climb to ALT/FL	Contact	
ESP1M	Climb straight-ahead. When passing 4DME CAS or 800 ft ALT, whichever is earlier, turn right heading 249 degrees to intercept and proceed on RDL219 CAS DVOR/DME. Maintain 2000 ft until 14DME CAS DVOR/DME. At 14DME CAS DVOR/DME turn left to intercept RDL285 ESP DVOR/DME climbing to 3000 ft inbound ESP DVOR/DME.	3000 ft ALT	-	Maintain 2000 ft until 14DME CAS DVOR/DME.